

North Boulder

Amy's Melody-Catalpa Neighborhood Walk

Start/End: Linden Avenue and Broadway
Distance: 2 miles with optional 1-mile side trip
Time: 45 minutes to 1 hour



Directions:

Get to know the Melody-Catalpa neighborhood with this easy 2-mile/3.45-kilometer walk, with an optional 1-mile walk south to the Community Plaza shops for refreshment.

Start at Linden Avenue and Broadway (accessible by the SKIP bus) and walk east into the neighborhood. At Conifer Court, turn right to stroll past one of the neighborhood's Little Free Libraries (located on the east side of the street). At the end of Conifer, turn left onto Kingwood and head east. You will see Melody Park on your left.



When you reach 16th Street, head north to walk the length of the park and see the playground area. Note there is a shelter at this park, but no restrooms.

Keep walking north past the intersection of 16th Street and Linden Avenue. 16th Street curves to the east and becomes Cloverleaf Drive. Stay on Cloverleaf until it turns south and intersects with Lombardy Drive. You will see a small park to your left: Catalpa Park. Take the sidewalk into the park.



Residents of the neighborhood help to beautify this park with annual clean-ups and planting days. The neighborhood is bounded by 19th Street, which you can see from the park (the RTD 204 bus is accessible here). Do not continue to 19th Street; instead, turn south and aim for the cul-de-sac of Catalpa Way.

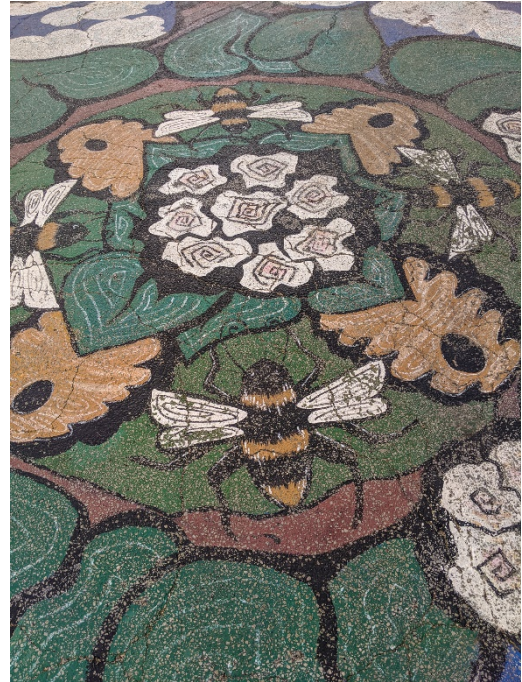
Follow Catalpa Way south, past another Little Free Library (on the west side of the street). Cross Kalmia Avenue and continue heading south on Catalpa Way. Turn right onto the cul-de-sac and head into Pineview Park. Pineview Park has a field, playground, and creek. Many kids waded in the creek, and on hot days, bring inner tubes to float downstream.

Walk west through the park, over the creek, and continue until you come to Cloverleaf Drive. Head north on Cloverleaf until you come to Kalmia. Turn West on Kalmia and continue until you reach 16th Street. Admire the "Paint the Pavement" project in the street at the intersection of 16th and Kalmia. The artwork was created by a Melody-Catalpa resident and inspired by the bee-loving community. Melody-Catalpa was Colorado's first "Bee Safe Neighborhood."

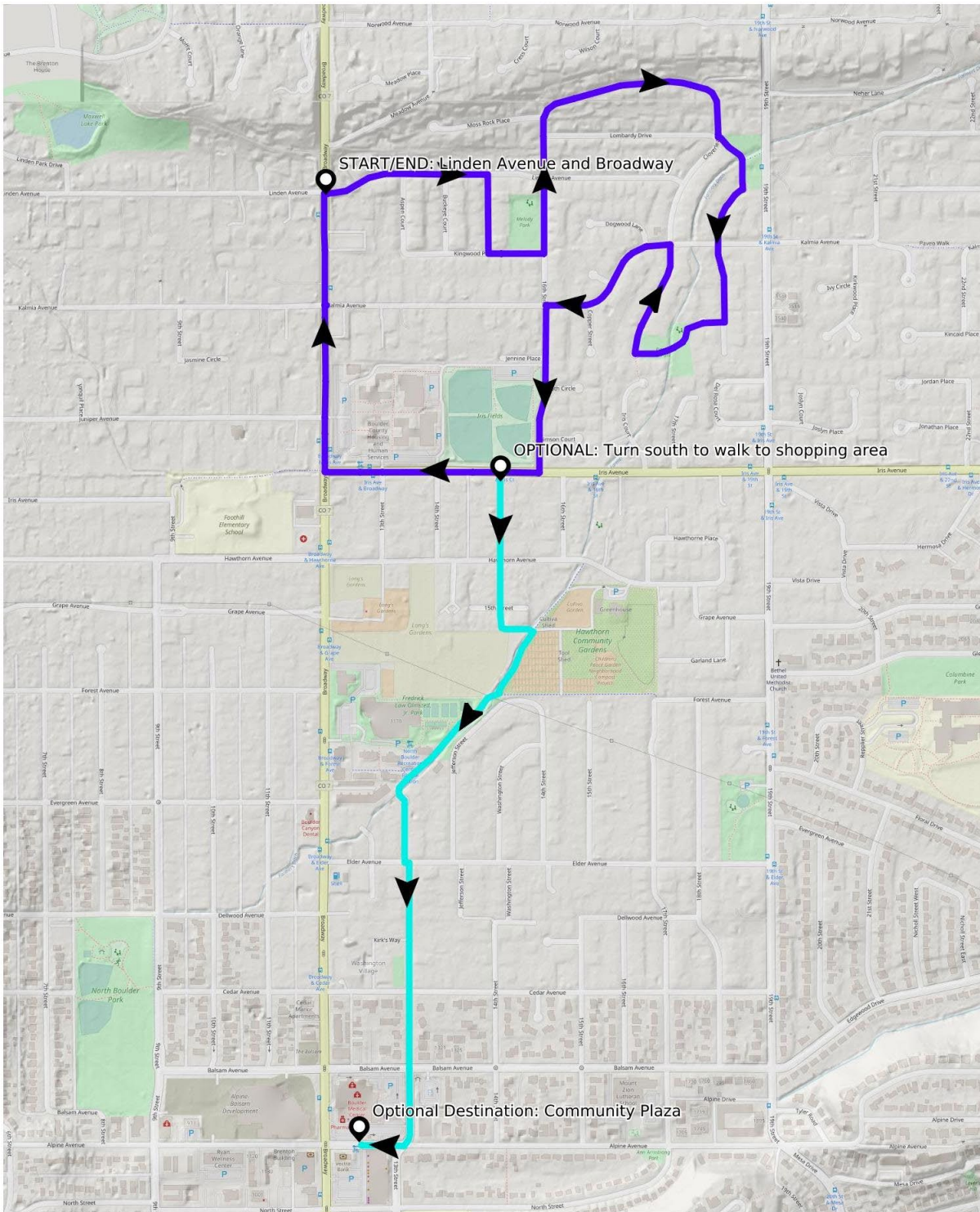
At the painted intersection, turn left (south). You will notice Iris Ball Fields on your right. Little League games are played here during the spring and summer months and you can often see smaller groups practicing year-round.

Here, you can choose either to close the loop by continuing west on Iris to Broadway and then walking north to your starting place or go south to the nearest shopping area for refreshment. You can catch the RTD 208 bus on Iris.

To walk to the shopping area, cross Iris Avenue at 15th Street and walk south to where 15th dead ends at a paved multi-use path. Follow the path southwest alongside Growing Gardens and the North Boulder Recreation Center, then turn left on 13th Street. Walk south on 13th Street (a Neighborhood GreenStreet) to Ideal Market and the Community Plaza Shops for refreshment.



Map: Melody-Catalpa Neighborhood Walk
 Online: <https://caltopo.com/m/C3CR>



Mercator Projection
 WGS84
 USNG Zone 13TDE
 CalTopo

