

## Boulder Mural and Street Art Tour

**Start/End:** Dairy Arts Center, 2590 Walnut Street  
**Distance:** 4.7 miles, with optional 2-mile additional loop  
**Time:** 2.5 to 3 hours

---

### Overview:

*Visit a variety of murals commissioned by Boulder's StreetWise Arts, street art paintings by local artist SMiLE, and other works of public art on this 4.75-mile tour through central Boulder and the CU campus. Optional: add a 2-mile loop south to visit several works on the walls of the old Wendy's restaurant building at 27th Way and Moorhead Avenue.*

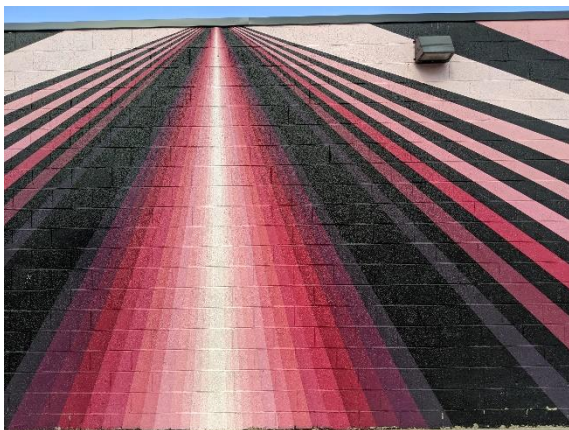
### Directions:

Begin the tour at the Dairy Arts Center, which features murals on almost every side of the building. Walk around to see projects by **LMNOPI**, **Koko Bayer**, and others. You can pause and enjoy the shaded garden and the babbling water running through the Boulder and Left Hand Ditch in the spring and summer.



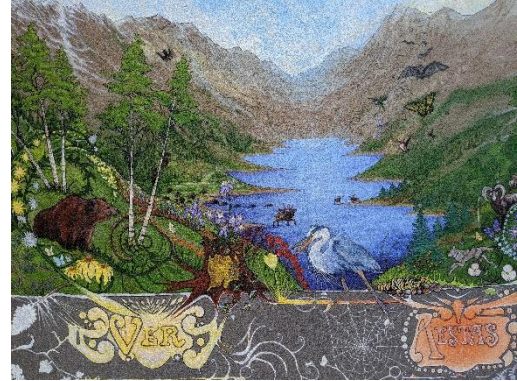
From the Dairy, cross Walnut Street, turn left and head west on Walnut. Cross Folsom Street at the pedestrian signal and turn right. Stop in front of the Boulder Chamber of Commerce building on the corner of Folsom and Pearl Streets to admire the **mural of a child holding a flower by Armando Silva**, painted in 2019.

Cross Pearl Street at the signal and walk through Greenleaf Park to Spruce Street. Turn left onto Spruce and walk on the south side of the street. As you pass Spruce Pool at 21<sup>st</sup> and Spruce, look through the fence to see a **playful mural of an underwater scene**. Cross 20<sup>th</sup> Street and turn left (south). Walk two blocks to Pearl Street and turn right.



At the intersection of 19<sup>th</sup> and Pearl, look for a **cat by street artist SMiLE** stenciled on a black freestanding mailbox on the corner. Next, cross Pearl Street to the south side and look for the **bright pink and black prismatic stripes of the Dalek Mural** on a west-facing wall of the white building at 19<sup>th</sup> and Pearl. Continue walking west down Pearl Street. During the statewide stay-at-home order, the restaurants Frasca and Pizzeria Locale, just west of 18<sup>th</sup> Street, featured murals on their windows and doors; the restaurants are open now, but look for other artful expressions along the street.

Turn right (north) onto 17<sup>th</sup> Street and stay on the east side of the street. Look for the **huge, red manatee (“Defend the Defenseless”) by Max Coleman** on the alley-facing wall of the Dojo4 building. Walk to Spruce Street and turn left. Stay on the south side of the street. Just past 16<sup>th</sup> Street, enjoy the **three-paneled mural of the seasons** on the north wall of the Village Green Society, by Zoe Markham.



Continue walking west on Spruce Street. Just before you reach Broadway, turn right into the 1<sup>st</sup> Bank driveway and check out the **“Spirit of Frank Shorter” mural**, painted by Jim Nelson in 1997 and periodically refreshed, on the west-facing wall to your right. Frank Shorter is credited with starting the American “running boom” after winning the gold medal in the marathon at the 1972 Summer Olympics in Munich. Shorter also co-founded the BolderBoulder 10K race.



Cross Broadway at the light, continue across 11<sup>th</sup> Street and turn left. Walk south on 11<sup>th</sup> Street and cross Canyon Boulevard at the pedestrian signal. Cross the pedestrian bridge over Boulder Creek. Look for the **SMILE painting of a red fox** at street level on a black trash can on your left along the path. Keep walking south on 11<sup>th</sup> Street. Stay on the east side of the street after crossing Arapahoe at the crosswalk. Walk up the hill alongside Alfalfa’s Market. Mid-way up the hill, look for stairs down into the parking lot on your left. Take the stairs, then look for the large, pink-toned mural on the wall to your right. **“A Day in the Mountains” was painted by Sam Parker** in 2016.

Walk back up the stairs to 11<sup>th</sup> Street and continue up the hill. At Grandview Avenue, jog left and then right again to keep walking on 11<sup>th</sup> Street. Go to Pennsylvania Avenue and turn left. Stay on the north side of the street. Look for the **fanciful mural painted by Mando Marie** on the wall to your left at the intersection with 13<sup>th</sup> Street. Cross 13<sup>th</sup> Street and turn right. Look for the entrance to an alley/event street between buildings mid-way between Pennsylvania Avenue and College Avenue, on your left. Enter the event street and walk to the alley on your left. Check out the multiple artworks on the wall in the alley, labeled on the map as **“The Root of the Hill.”**

Turn left onto College Avenue and take the Broadway underpass to the CU campus. Head east on the paths through campus, walking toward 18<sup>th</sup> Street. Turn left onto the path in front of Norlin Library, just before 18<sup>th</sup> Street. [OR, take the optional 2-mile loop south to 27<sup>th</sup> Way and Moorhead Avenue, to view a collection of murals on the old Wendy’s restaurant



building there – see map for directions.] Head north, following the path around Sewall field. Turn left onto the path on the north side of the field and look for the **freestanding mosaic monument to important figures in Chicano history**.

Walk west to the footpath and stairs going down the hill toward 17<sup>th</sup> Street. Walk north on 17<sup>th</sup> and take the underpass onto the Boulder Creek Path, heading west. Look for the mural under the bridge to Boulder High School, **“Protect,”** by Patrick Maxcy. The mural features endangered animals; look across the creek for an extension of the artwork on a panel by the water.



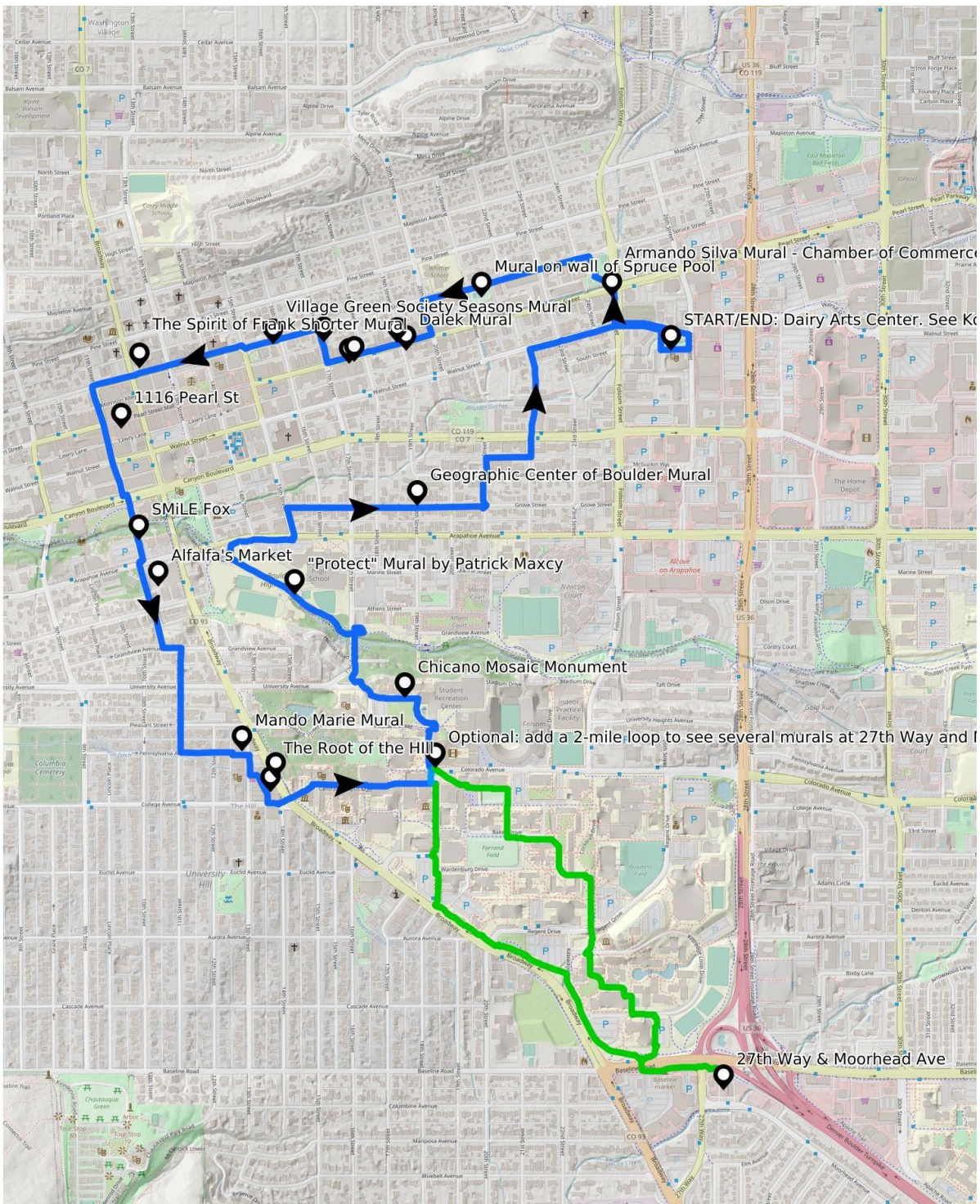
You can either cut through the Boulder High School property to get to 15<sup>th</sup> Street, or follow the Boulder Creek Path west to the path that takes you to Arapahoe Avenue. Walk north on 15<sup>th</sup> Street for one block (notice the inspirational phrases engraved in the sidewalk in this design district), then turn right onto Grove Street. At the intersection of 19<sup>th</sup> and Grove, check out the **Geographic Center of Boulder mural** in the street. The mural was designed by local artist Jan Burch and is maintained by the Goss Grove Neighborhood Association.

Walk east on Grove Street to 21<sup>st</sup> and turn left. Walk to the intersection of 22<sup>nd</sup> and Canyon, where you can cross safely at the pedestrian signal. Continue north on 22<sup>nd</sup> Street to Walnut and turn right. Walk east on Walnut back to the Dairy Center for the Arts, where you started.



# Map: Boulder Mural and Street Art Tour

Online: <https://caltopo.com/m/RE25>



Mercator Projection  
 WGS84  
 USNG 13SDE-13TDE  
 CalTopo

