

LEGEND:

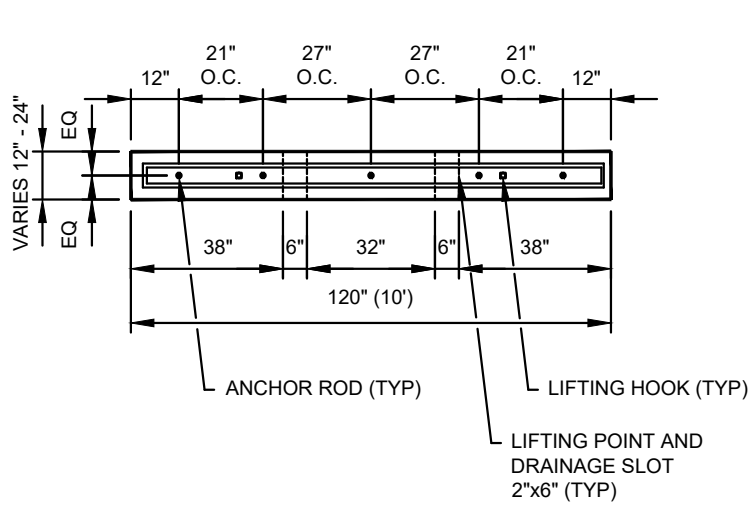
- FLEX POST DELINEATOR
- GREEN PAVEMENT MARKING WITH EMBEDDED WHITE BIKE SYMBOL
- DIRECTIONAL INDICATOR STRIP (SEE DRAWING NO. X.XX.X)

ACCESSIBLE RAMP SLOPE (RMP) = 7.8% TYP (8.3% MAX, 4% MIN)

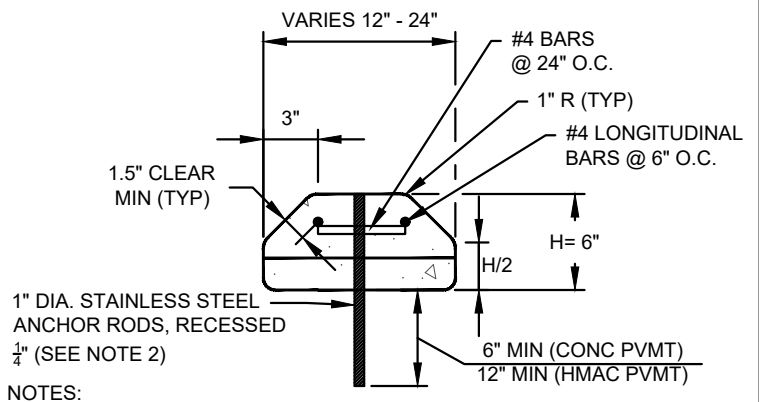
NOTES:

1. DESIGN PLANS SHOULD BE CONSULTED FOR VARIATIONS
2. SEE CITY OF BOULDER DESIGN AND CONSTRUCTION STANDARDS, SECTION 2.07, TABLE 2.5 FOR STANDARD LANE WIDTHS
3. BIKE LANE TAPERS PREFERRED AT 7:1 SHIFT, MINIMUM 3:1 SHIFT IN CONSTRAINED LOCATIONS WHERE SPEED IS ≤ 13 MPH
4. BIKE RAMPS PREFERRED TO HAVE ACCESSIBLE SLOPE, BUT NOT REQUIRED
5. FOR BIKE LANES AT SIDEWALK ELEVATION WITHOUT BUFFER TREATMENT, 1' MINIMUM DIRECTIONAL INDICATOR STRIP WITHIN THE SIDEWALK; TYPICALLY THIS IS LOCATED 1' FROM THE EDGE OF THE BIKE LANE

BIKE RAMP



**PRE-CAST CONCRETE CURB
PLAN VIEW**



NOTES:

1. DESIGN PLANS SHOULD BE CONSULTED FOR VARIATIONS
2. DRILL AND EPOXY SMOOTH 1" DIA. STAINLESS STEEL ANCHOR RODS. FOR CONCRETE PAVEMENT, ANCHORS SHALL BE A MINIMUM OF 3" CLEAR FROM ALL JOINTS

**PRE-CAST CONCRETE CURB
SECTION VIEW**

DRAWN BY: TW
 CHECKED BY: CS
 APPROVED BY:
 DIRECTOR OF PUBLIC WORKS

CITY OF BOULDER, COLORADO
 BIKE RAMP &
 PRE-CAST CURB BUFFER

ISSUED: JAN 02, 2023
 REVISED: JAN 02, 2023

DRAWING NO.
 2.43a