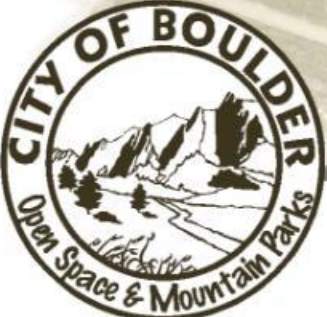


SITE LEGEND

	PROPERTY LINE
	STRUCTURES / AG. HOUSING
	EXISTING TRAIL / AG. ROAD
	PROPOSED ACCESS ROAD
	PROPOSED TRAILS (DRIVABLE)
	PROPOSED TRAILS (ACCESSIBLE)
	FENCING
	ACCESS TO WATER
	INTERP. NODE / PROGRAM AREAS
	INDIGENOUS PLANTS
	PONDS / FORMER GRAVEL MINES
	WETLANDS
	RESTORATION: MINIMUM EXTENT
	RESTORATION: MAXIMUM EXTENT

- ### CONCEPT PLAN ELEMENTS
- 1 Ecological Restoration:** to heal the land from past land uses and improve ecological health
 - 2 Healing Trail:** indigenous plantings, interpretive elements, and program areas provide places for education, reflection, healing, and gathering
 - 3 Visitor Access:** an entrance drive leads to a parking area with a bus drop-off to support visitors and provide site access
 - 4 Farmstead Improvements:** to support agriculture - recommendations include restoration of the historic Queen Anne style house and existing agricultural structures.



SITE CONCEPT: FORT CHAMBERS / POOR FARM

NORTH

0 300' 600'

SITE CONCEPT
SC-1
3.7.2024

Existing **wetlands** and **vegetation** support a variety of **wildlife**. The Site Concept includes recommendations to **heal the land** from past land uses, with large-scale restoration of the Boulder Creek corridor to enhance ecological functions while supporting wildlife and environmental health.



Remove trash, debris, and noxious weeds



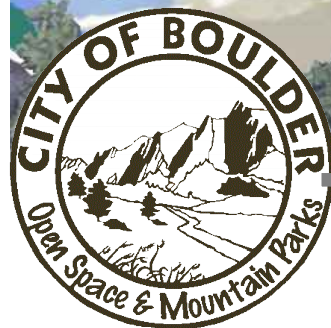
Restore gravel ponds and reconnect the floodplain



Example restoration site

1

Ecological Restoration: to heal the land from past land uses and improve ecological health



ECOLOGICAL RESTORATION: FORT CHAMBERS / POOR FARM



Heal the Land, Heal the People

An interpretive, healing trail provides places for education, reflection, healing, and gathering. The images are examples of the types of elements that could be included to share the history of the site and [connection to the Sand Creek Massacre](#).



Note: Trails may be subject to seasonal wildlife closures

SITE LEGEND	
	PROPERTY LINE
	PROPOSED ACCESS ROAD
	PROPOSED TRAILS (DRIVABLE)
	PROPOSED TRAILS (ACCESSIBLE)
	ACCESS TO WATER
	PONDS / FORMER GRAVEL MINES
	WETLANDS
	INTERP. NODE / PROGRAM AREAS
	INDIGENOUS PLANTS



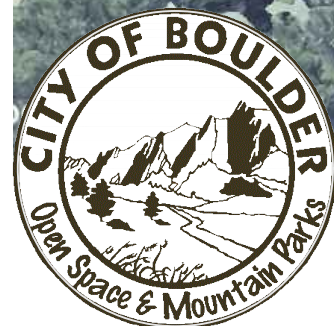
photo: Holly Lepere, Lepere Studio



photo: Clemens Franz, Creative Commons



Healing Trail: indigenous plantings, interpretive elements, and program areas provide places for education, reflection, healing, and gathering

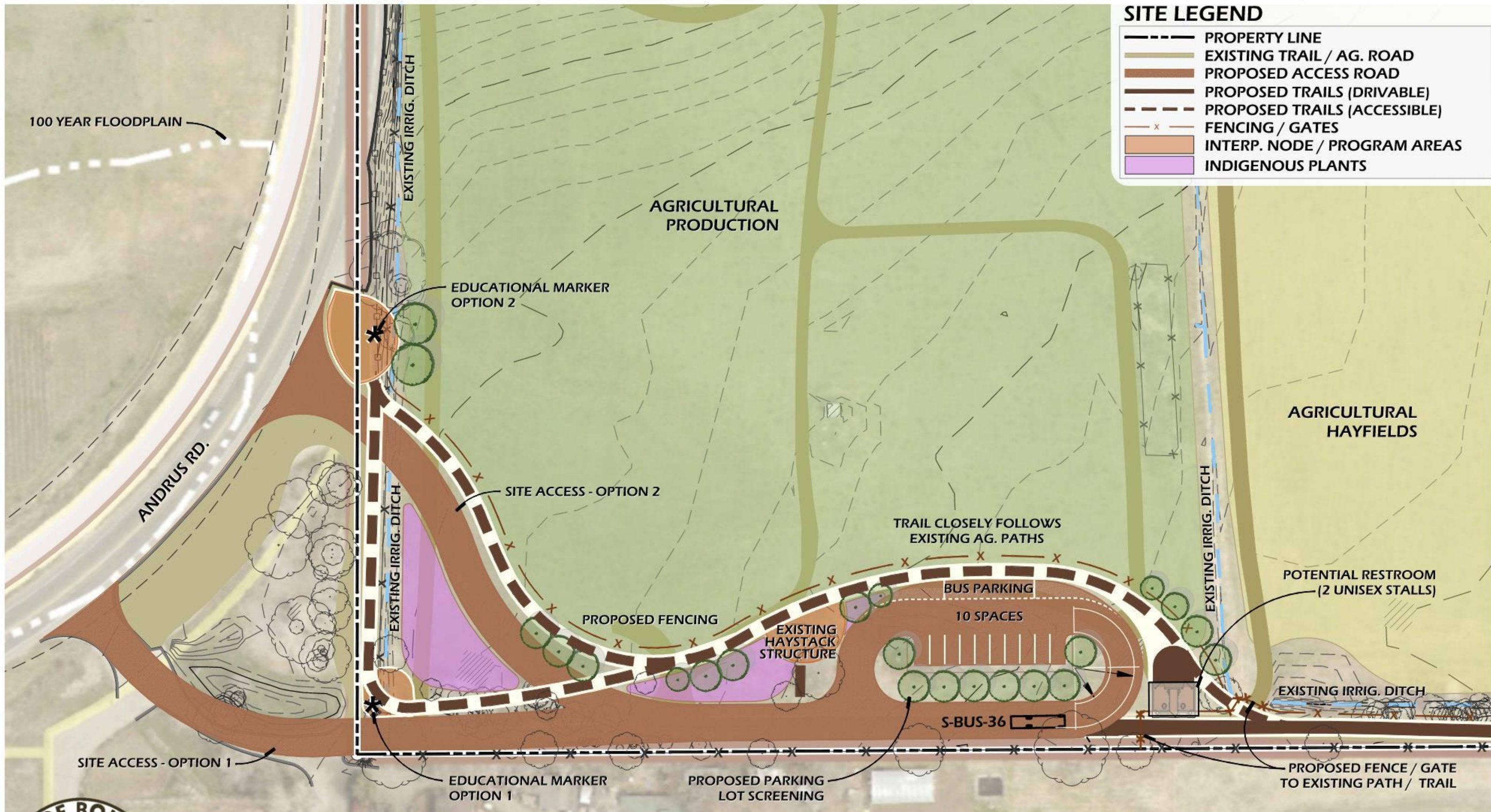


INTERPRETIVE HEALING TRAIL: FORT CHAMBERS / POOR FARM

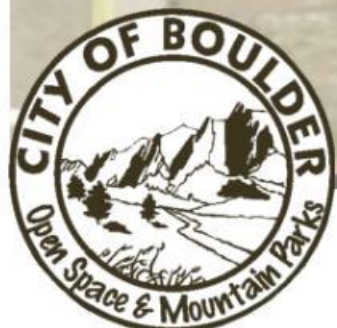


SITE LEGEND

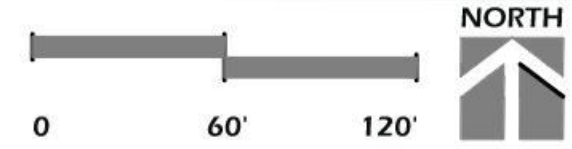
	PROPERTY LINE
	EXISTING TRAIL / AG. ROAD
	PROPOSED ACCESS ROAD
	PROPOSED TRAILS (DRIVABLE)
	PROPOSED TRAILS (ACCESSIBLE)
	FENCING / GATES
	INTERP. NODE / PROGRAM AREAS
	INDIGENOUS PLANTS



3 Visitor Access: an entrance drive leads to a parking area with a bus drop-off to support visitors and provide site access



VISITOR ACCESS: FORT CHAMBERS / POOR FARM



This Site Concept includes recommendations to preserve and enhance **existing agricultural uses**.

This site is uniquely suited to support diversified vegetable farming due to its **fertile soils, irrigation water, and farm structures**.

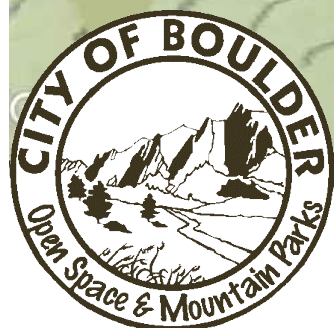


Restore the historic house that once served as the **Boulder County Poor Farm**. The house would support an agricultural tenant with education opportunities explored as a secondary use.

Repair **existing farm structures** to support agricultural operations.



4 Farmstead Improvements: to support agriculture - recommendations include restoration of the historic Queen Anne style house and existing agricultural structures.



AGRICULTURE: FORT CHAMBERS / POOR FARM

