

Summary of Changes to the BVCP Trails Map

Proposed Changes

The proposed changes to the BVCP Trails map include:

- Addition of descriptive language on the map (*purpose of map, definitions of proposed trails, conceptual trail alignments and conceptual connections, and where to get more information*)
- New proposed trails and new conceptual alignment for proposed trails
- Modifications to proposed trails
- Changes from 'proposed' to 'existing' to reflect newly constructed trails.
- Removal (deletion) of proposed trails and proposed rerouting / removal of existing trails
- Map corrections

New Proposed Trails

New proposed trails are highlighted in purple (circles and lines). These include upgrades to multi-use paths and proposed connections to trails or other paths identified in the Transportation Master Plan (TMP), West and North Trail Study Area Plans, or the Boulder Reservoir Master Plan.

- Newly identified trails in the North Trail Study Area Plan (2016):
 - Antler Loop – west of Wonderland Lake
 - Wonderland Lake– Designate parallel path on north side of Wonderland Lake
 - North Sky Trail – Foothills Trail connection to Joder Ranch Trail
 - Mahogany Loop – loop on Joder Ranch Trail
 - Connection from Joder Ranch Trail to Buckingham Park
 - Connection from proposed Coyote Trailhead to Joder Ranch Trail
 - Connection from Foothills Trail to Degge / Eagle trails
 - Shale Trail – Boulder Valley Ranch Trailhead to Eagle Trail
 - Wrangler Trail – Hidden Valley Trail to Kelso Road
 - Talon Trail – Boulder Reservoir to Niwot Road
 - Area III Future Park Site to OSMP – *conceptual connection*
- Boulder Reservoir (2012): conceptual alignment around the west side of the reservoir and a trail along the north side of the reservoir
- Diagonal to IBM – From TMP
- Various small connections added in the Transportation Master Plan Update (2014)
 - Lehigh to Bear Creek Elementary School
 - Hanover – Broadway east to Summit Middle School
 - Dartmouth – Broadway east to Martin Park / Creekside Elementary School
 - Sioux Dr. at EBRC
 - Greenways connection 38th St. alignment – north of E Aurora at BCSIS/High Peaks
 - CU east – Discovery to Foothills
 - CU east – Potts field across Boulder Creek
 - CU – Boulder Creek connection to Recreation Center
 - Iris south to Hawthorn (near 22nd St.)
 - Utica connection to OSMP north of Wonderland Lake

Modifications to Existing Trails

Modifications to existing trails occurred in various places on Open Space properties due to flood impacts and reconstruction. These are highlighted in yellow.

Modifications to Proposed Trails

Modifications to proposed trails are highlighted in blue and reflect areas where better information about the proposed alignment is available or where alignments have been modified from the previously adopted BVCP Trails Map.

- Trail alignment planned from Airport Rd to Andrus Rd - TMP
- Diagonal – to Pleasantville Fields, Clarified in the TMP
- Anemone Trail – WTSA – conceptual alignment to refined alignment

Constructed Trails (Constructed/Modified)

Trails that have been constructed since the 2010 update are highlighted in green.

- US36 at Table Mesa east to planning area boundary
- Baseline – Broadway to 36th St.
- CU – Cockerell Dr.
- CU – 28th St. (Baseline to Colorado)
- CU – Boulder Creek to Arapahoe (near 22nd St)
- Arapahoe – Folsom to 30th St. north and south side
- Arapahoe – Cherryvale east to Westview Dr. on south and east to 75th on north
- Boulder Creek path to 48th St. (north of hospital)
- 30th – Arapahoe to Walnut
- Walnut – 29th -30th
- Pearl and 30th (NW and SE)
- Pearl – 30th to Foothills north side
- Foothills Hwy (west side – Goose Creek path to Valmont
- Valmont Rd. north side at Valmont Park
- Valmont and Airport Rd NW
- Iris Ave and Broadway at Boulder County campus
- Crestview Park
- Fourmile Creek Path – Broadway to Violet
- Fourmile Creek Path – 26th to 28th
- Arrows removed: Chapman Dr. built; US36 multi-use path built
- Various OSMP completed trails in western properties

Deletion of Trails

Proposed trails that are recommended for removal from the BVCP Trails Map are shown in orange. These reflect TMP or TSA planning processes and adopted plans.

- Hwy 93 to Greenbriar: 2014 TMP, connection determined not necessary
- Gunbarrel west of 63rd Street and Twin Lakes; Gunbarrel Ave north to proposed trail and Spine Rd at Lookout Rd south to proposed trail; 2014 TMP- difficult to construct in drainageway and provides little connectivity.
- 27th St./Mapleton to Goose Creek (west of 28th St):
- Elmers Twomile creek path connections between Glenwood and Iris; 2014 TMP- difficult to construct due to buildings, not needed
- 28th and Iris – connection to Diagonal Hwy; trails reconfigured with Diagonal reconstruction
- Foothills Hwy west side connection to Wonderland Creek; different alignment
- Southern section of Sunshine Trail – removed in WTSA process
- Various small connections identified through TMP connections planning (*some need to be changed on the North Boulder Subcommunity Plan*)
 - Table Mesa – Vassar to Broadway
 - CU Pleasant St. to stadium
 - Mapleton – Goose Creek (west of 30th St.)
 - Boulder Junction to RR

- 28th St. west to Wonderland creek path
- Kalmia to Linden at 23rd St.
- Linden 19th to 21st
- 9th Street – Iris to Jasmine
- Poplar – 17th to 19th
- 19th St. north of Yarmouth to US36

Removal of Existing Trails

Through the North Trail Study Area Plan sections of the following existing trails are recommended for closure and removal: Old Kiln Trail, Old Mill Trail, Mesa Reservoir Trail, and Degge Trail.

Previously existing trails that have been removed due to flood recovery or that had been identified through planning processes are shown in grey.

Map Corrections

Map corrections are highlighted in pink, and are trails that are included in the TMP, TSA, or other Planning process, and appear to have been inadvertently left off from the 2010 version of the map.

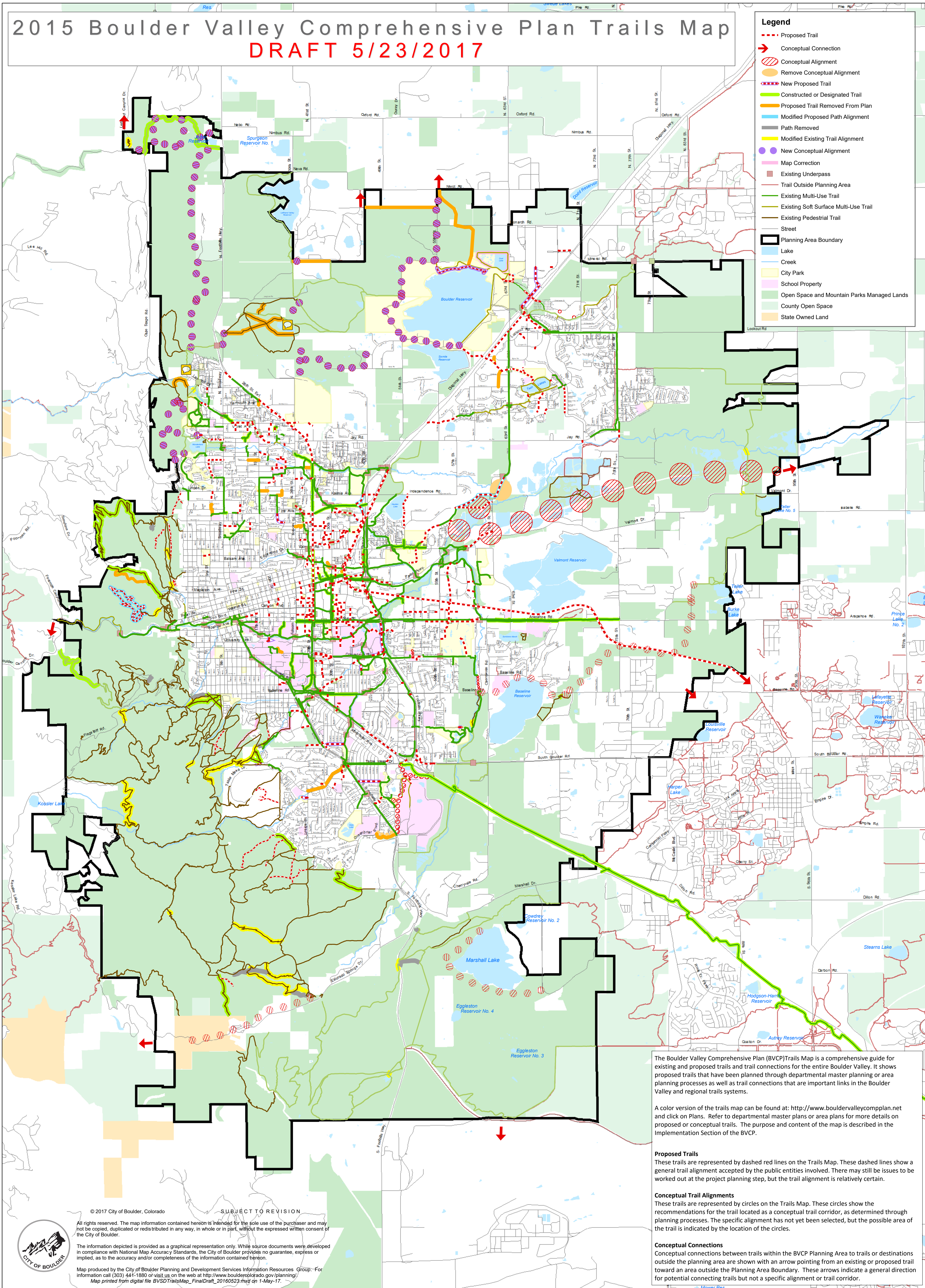
- Four Pines Trail – exists, not previously shown on map
- West of 71st Street by Walden Ponds – exists, not previously shown on map
- East of Twin Lakes - exists, not previously shown on map
- Around Coot Lake - exists, not previously shown on map

Revisions to the BVCP Trails Map Description

Minor revisions are proposed to the descriptions of proposed trails and conceptual trail alignments. Arrows indicating conceptual connections outside the planning boundary have been modified to be consistent in size. Additionally, revisions are proposed to the implementation section and BVCP Trails Map Description.

2015 Boulder Valley Comprehensive Plan Trails Map

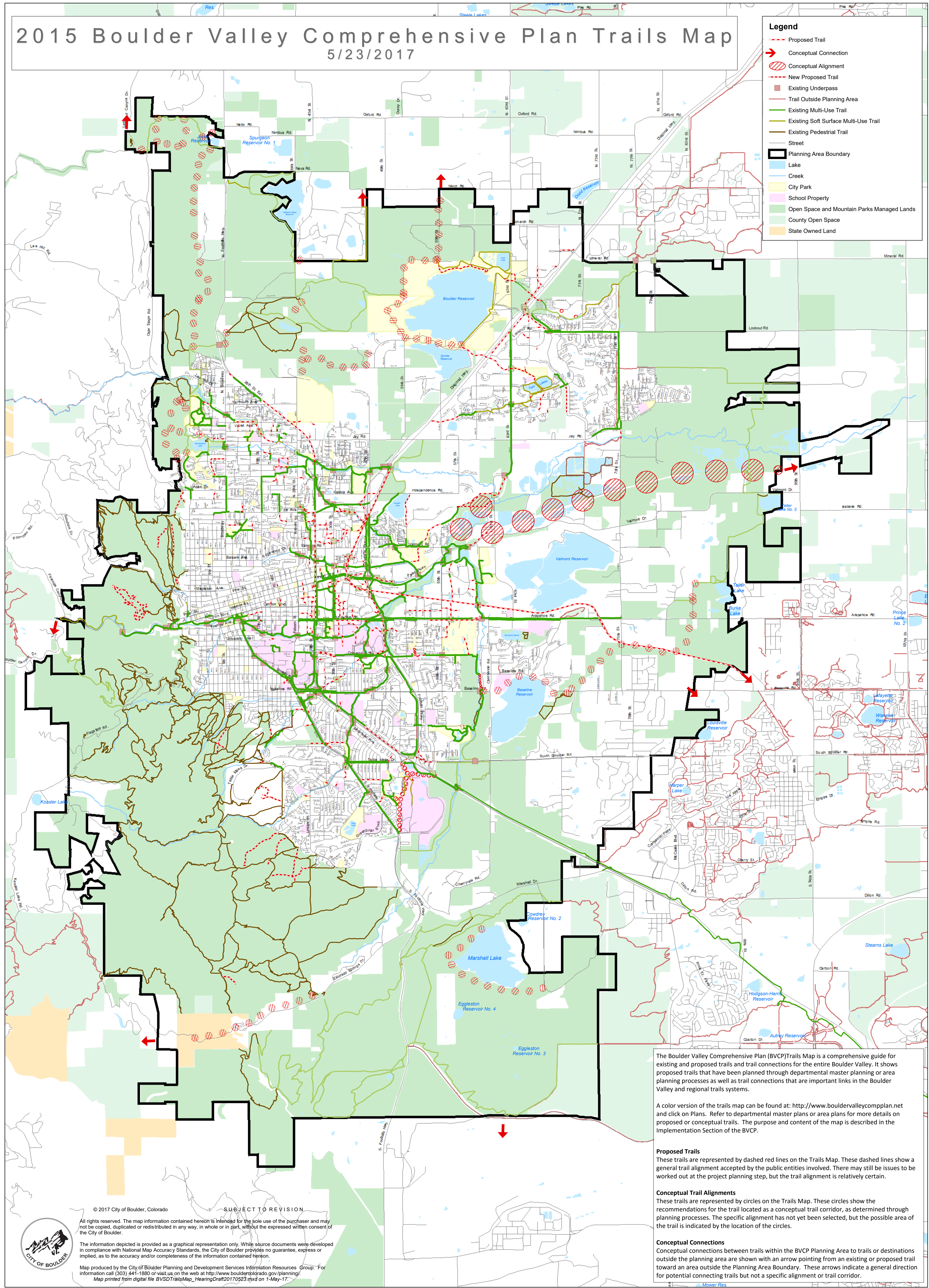
DRAFT 5/23/2017



2015 Boulder Valley Comprehensive Plan Trails Map

5/23/2017

- Legend**
- Proposed Trail
 - Conceptual Connection
 - Conceptual Alignment
 - New Proposed Trail
 - Existing Underpass
 - Trail Outside Planning Area
 - Existing Multi-Use Trail
 - Existing Soft Surface Multi-Use Trail
 - Existing Pedestrial Trail
 - Street
 - Planning Area Boundary
 - Lake
 - Creek
 - City Park
 - School Property
 - Open Space and Mountain Parks Managed Lands
 - County Open Space
 - State Owned Land



The Boulder Valley Comprehensive Plan (BVCP) Trails Map is a comprehensive guide for existing and proposed trails and trail connections for the entire Boulder Valley. It shows proposed trails that have been planned through departmental master planning or area planning processes as well as trail connections that are important links in the Boulder Valley and regional trails systems.

A color version of the trails map can be found at: <http://www.bouldervalleycompplan.net> and click on Plans. Refer to departmental master plans or area plans for more details on proposed or conceptual trails. The purpose and content of the map is described in the Implementation Section of the BVCP.

Proposed Trails
These trails are represented by dashed red lines on the Trails Map. These dashed lines show a general trail alignment accepted by the public entities involved. There may still be issues to be worked out at the project planning step, but the trail alignment is relatively certain.

Conceptual Trail Alignments
These trails are represented by circles on the Trails Map. These circles show the recommendations for the trail located as a conceptual trail corridor, as determined through planning processes. The specific alignment has not yet been selected, but the possible area of the trail is indicated by the location of the circles.

Conceptual Connections
Conceptual connections between trails within the BVCP Planning Area to trails or destinations outside the planning area are shown with an arrow pointing from an existing or proposed trail toward an area outside the Planning Area Boundary. These arrows indicate a general direction for potential connecting trails but not a specific alignment or trail corridor.

© 2017 City of Boulder, Colorado
All rights reserved. The map information contained hereon is intended for the sole use of the purchaser and may not be copied, duplicated or redistributed in any way, in whole or in part, without the expressed written consent of the City of Boulder.
The information depicted is provided as a graphical representation only. While source documents were developed in compliance with National Map Accuracy Standards, the City of Boulder provides no guarantee, express or implied, as to the accuracy and/or completeness of the information contained hereon.
Map produced by the City of Boulder Planning and Development Services Information Resources Group. For information call (303) 441-1880 or visit us on the web at <http://www.bouldercolorado.gov/planning/>
Map printed from digital file BVSDTrailsMap_HearingDraft20170523.mxd on 1-May-17.



SUBJECT TO REVISION