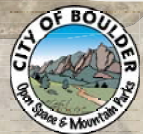


LEGEND

- STUDY AREA
- SOUTH BOULDER CREEK TRAIL (white)
- UNDESIGNATED TRAIL (white)
- BOULDER COUNTY PARCELS
- FEDERALLY THREATENED RARE PLANT SPECIES
- CITY OF BOULDER PARKS + RECREATION WETLAND MITIGATION SITE
- (9) RARE PLANT COMMUNITIES*
Represents nine different rare plant communities

*NOTE: Some data layers are clipped to OSMP property lines. Therefore, wildlife, plant communities or wetlands are likely to be found beyond the layer boundaries.



Revised: 5/15/19

GEBHARD PROJECT: BASEMAP

0 150 300 450 600 750

SCALE 1" = 300'-0" (on 8.5"x11")



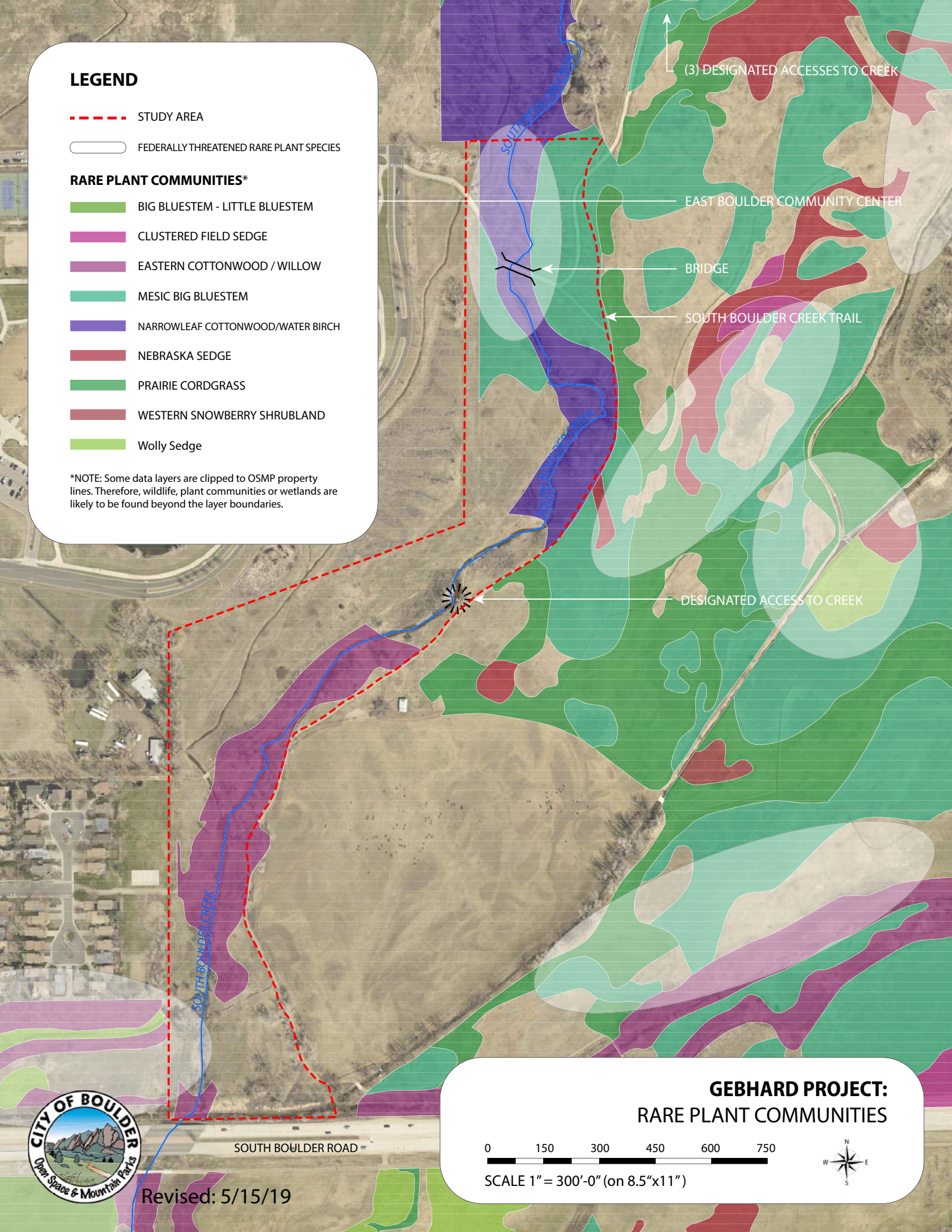
LEGEND

- - - STUDY AREA
- FEDERALLY THREATENED RARE PLANT SPECIES

RARE PLANT COMMUNITIES*

- BIG BLUESTEM - LITTLE BLUESTEM
- CLUSTERED FIELD SEDGE
- EASTERN COTTONWOOD / WILLOW
- MESIC BIG BLUESTEM
- NARROWLEAF COTTONWOOD/WATER BIRCH
- NEBRASKA SEDGE
- PRAIRIE CORDGRASS
- WESTERN SNOWBERRY SHRUBLAND
- Wolly Sedge

*NOTE: Some data layers are clipped to OSMP property lines. Therefore, wildlife, plant communities or wetlands are likely to be found beyond the layer boundaries.



(3) DESIGNATED ACCESSES TO CREEK

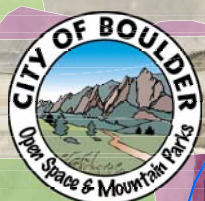
EAST BOULDER COMMUNITY CENTER

BRIDGE

SOUTH BOULDER CREEK TRAIL

DESIGNATED ACCESS TO CREEK

SOUTH BOULDER ROAD



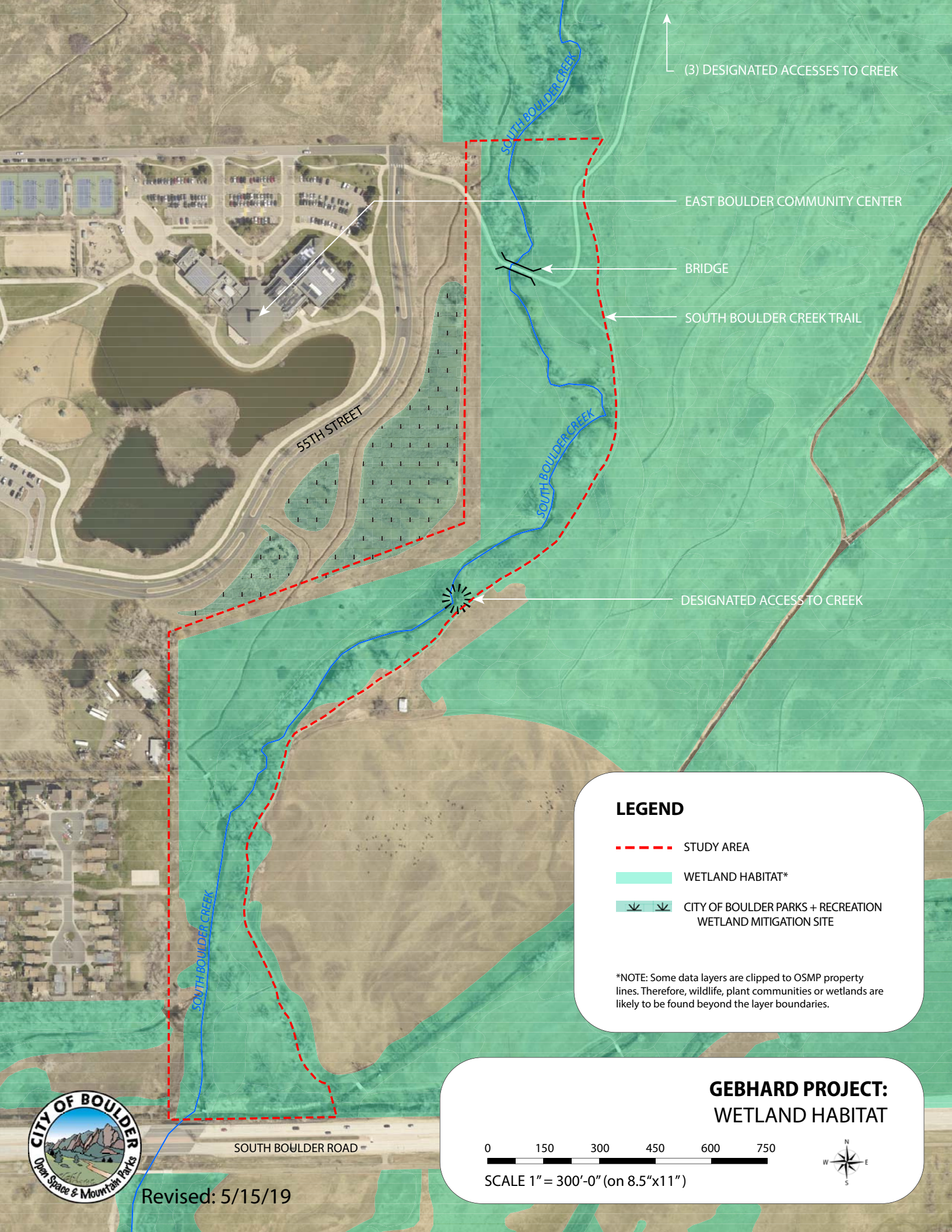
Revised: 5/15/19

GEBHARD PROJECT: RARE PLANT COMMUNITIES



SCALE 1" = 300'-0" (on 8.5"x11")





(3) DESIGNATED ACCESSES TO CREEK

EAST BOULDER COMMUNITY CENTER

BRIDGE

SOUTH BOULDER CREEK TRAIL

55TH STREET

DESIGNATED ACCESS TO CREEK

LEGEND

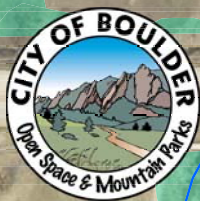
- - - STUDY AREA
- WETLAND HABITAT*
- < > CITY OF BOULDER PARKS + RECREATION WETLAND MITIGATION SITE

*NOTE: Some data layers are clipped to OSMP property lines. Therefore, wildlife, plant communities or wetlands are likely to be found beyond the layer boundaries.

**GEBHARD PROJECT:
WETLAND HABITAT**

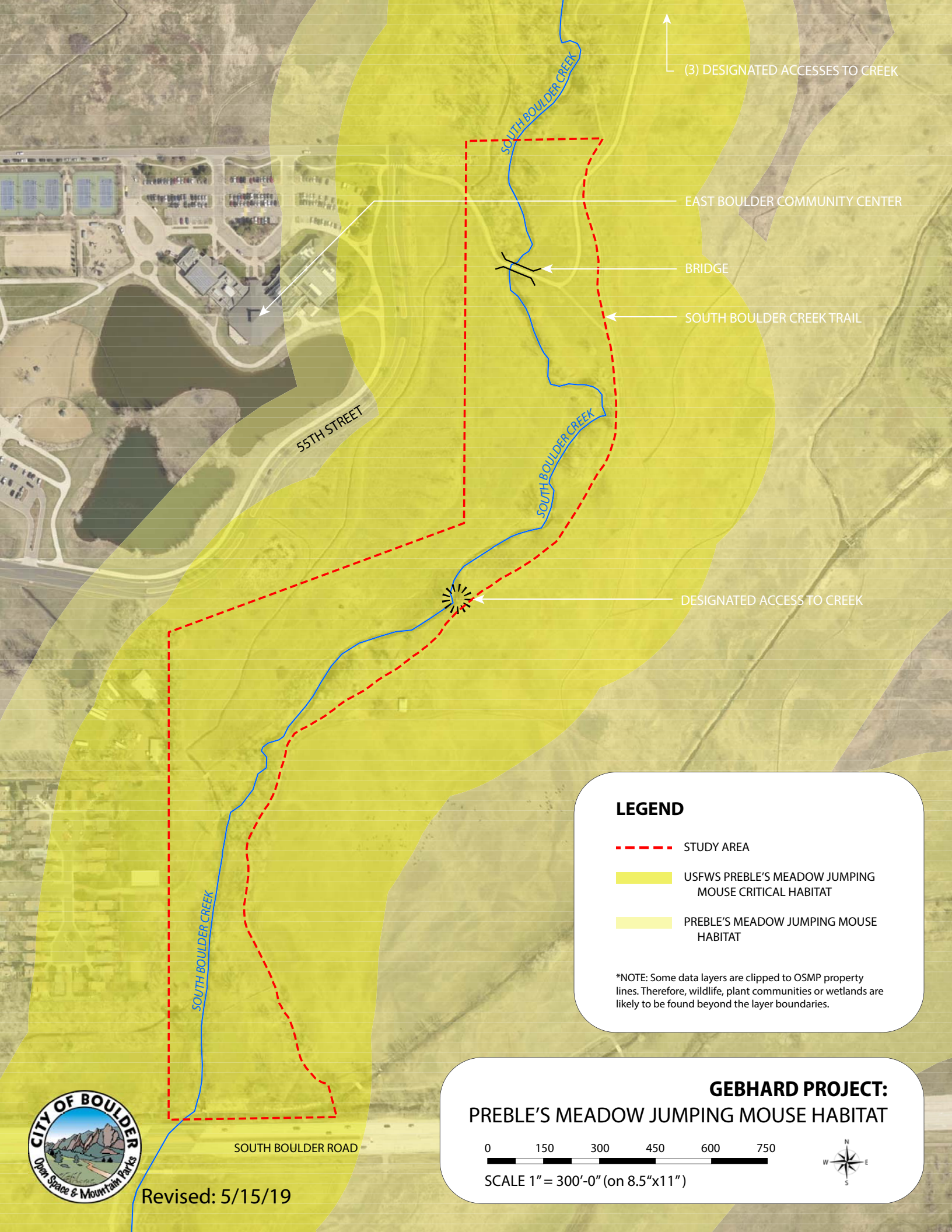


SCALE 1" = 300'-0" (on 8.5"x11")



Revised: 5/15/19

SOUTH BOULDER ROAD



(3) DESIGNATED ACCESSES TO CREEK

EAST BOULDER COMMUNITY CENTER

BRIDGE

SOUTH BOULDER CREEK TRAIL

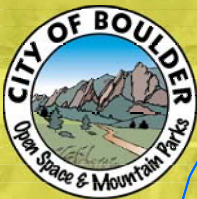
55TH STREET

DESIGNATED ACCESS TO CREEK

LEGEND

- - - STUDY AREA
- USFWS PREBLE'S MEADOW JUMPING MOUSE CRITICAL HABITAT
- PREBLE'S MEADOW JUMPING MOUSE HABITAT

*NOTE: Some data layers are clipped to OSMP property lines. Therefore, wildlife, plant communities or wetlands are likely to be found beyond the layer boundaries.



SOUTH BOULDER ROAD

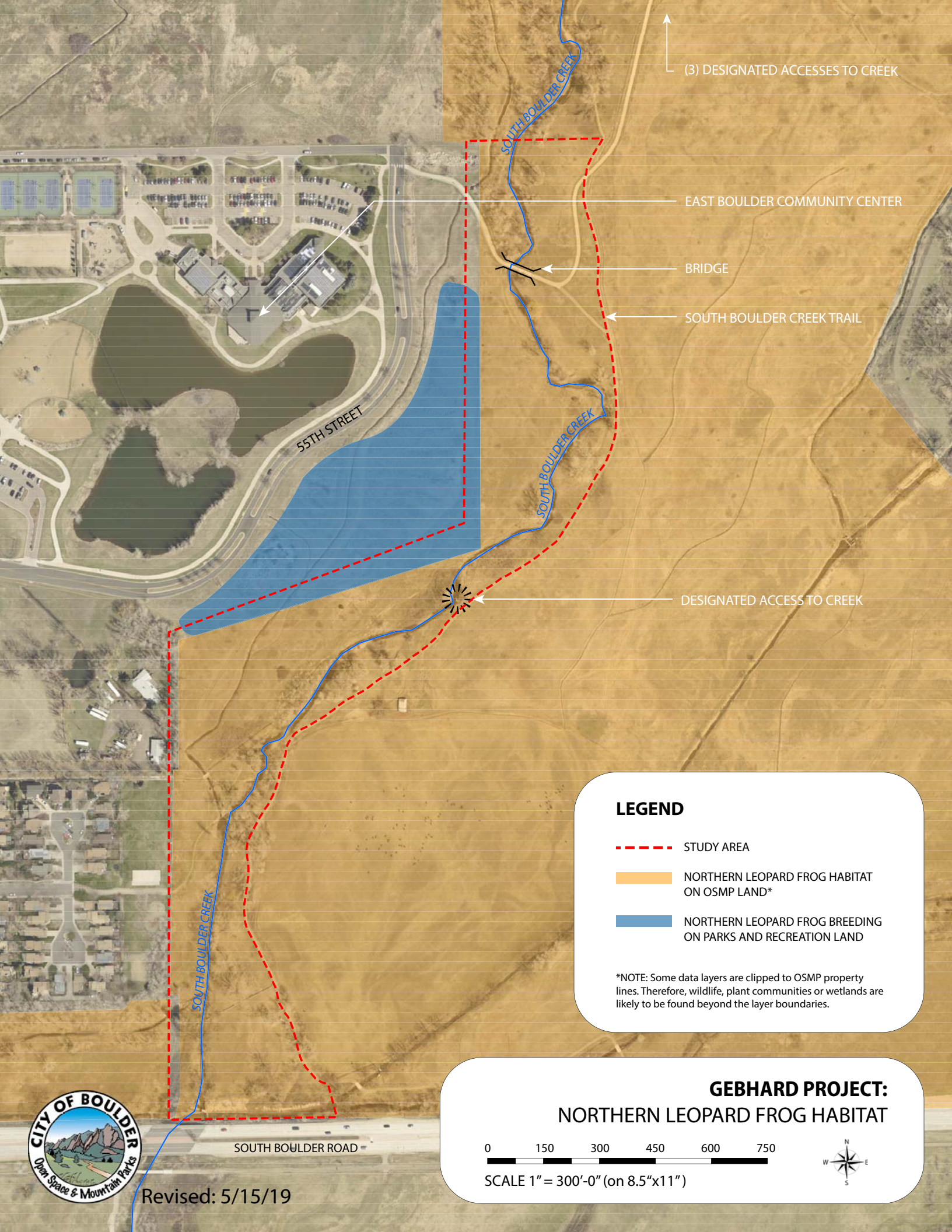
Revised: 5/15/19

**GEBHARD PROJECT:
PREBLE'S MEADOW JUMPING MOUSE HABITAT**



SCALE 1" = 300'-0" (on 8.5"x11")





(3) DESIGNATED ACCESSES TO CREEK

EAST BOULDER COMMUNITY CENTER

BRIDGE

SOUTH BOULDER CREEK TRAIL

55TH STREET

DESIGNATED ACCESS TO CREEK

LEGEND

- - - STUDY AREA
- NORTHERN LEOPARD FROG HABITAT ON OSMP LAND*
- NORTHERN LEOPARD FROG BREEDING ON PARKS AND RECREATION LAND

*NOTE: Some data layers are clipped to OSMP property lines. Therefore, wildlife, plant communities or wetlands are likely to be found beyond the layer boundaries.

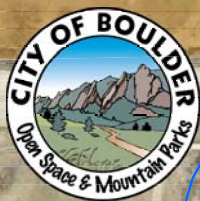
**GEBHARD PROJECT:
NORTHERN LEOPARD FROG HABITAT**



SCALE 1" = 300'-0" (on 8.5"x11")



SOUTH BOULDER ROAD



Revised: 5/15/19

BASELINE ROAD

BOBOLINK TRAILHEAD

EAST BOULDER COMMUNITY CENTER

55TH STREET

CHERRYVALE ROAD

SOUTH BOULDER ROAD

LEGEND

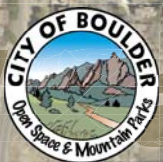
- - - STUDY AREA
- ▲ NON-NATIVE TREES REMOVED
- NATIVE PLANTINGS
- WEED CONTROL

*NOTE: Some data layers are clipped to OSMP property lines. Therefore, wildlife, plant communities or wetlands are likely to be found beyond the layer boundaries.

GEBHARD PROJECT: RESTORATION EFFORTS

0 250 500 750 1000 1500

SCALE 1" = 500'-0" (on 8.5"x11")



Revised: 5/15/19