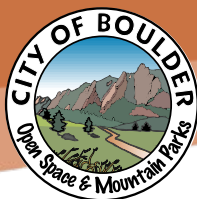
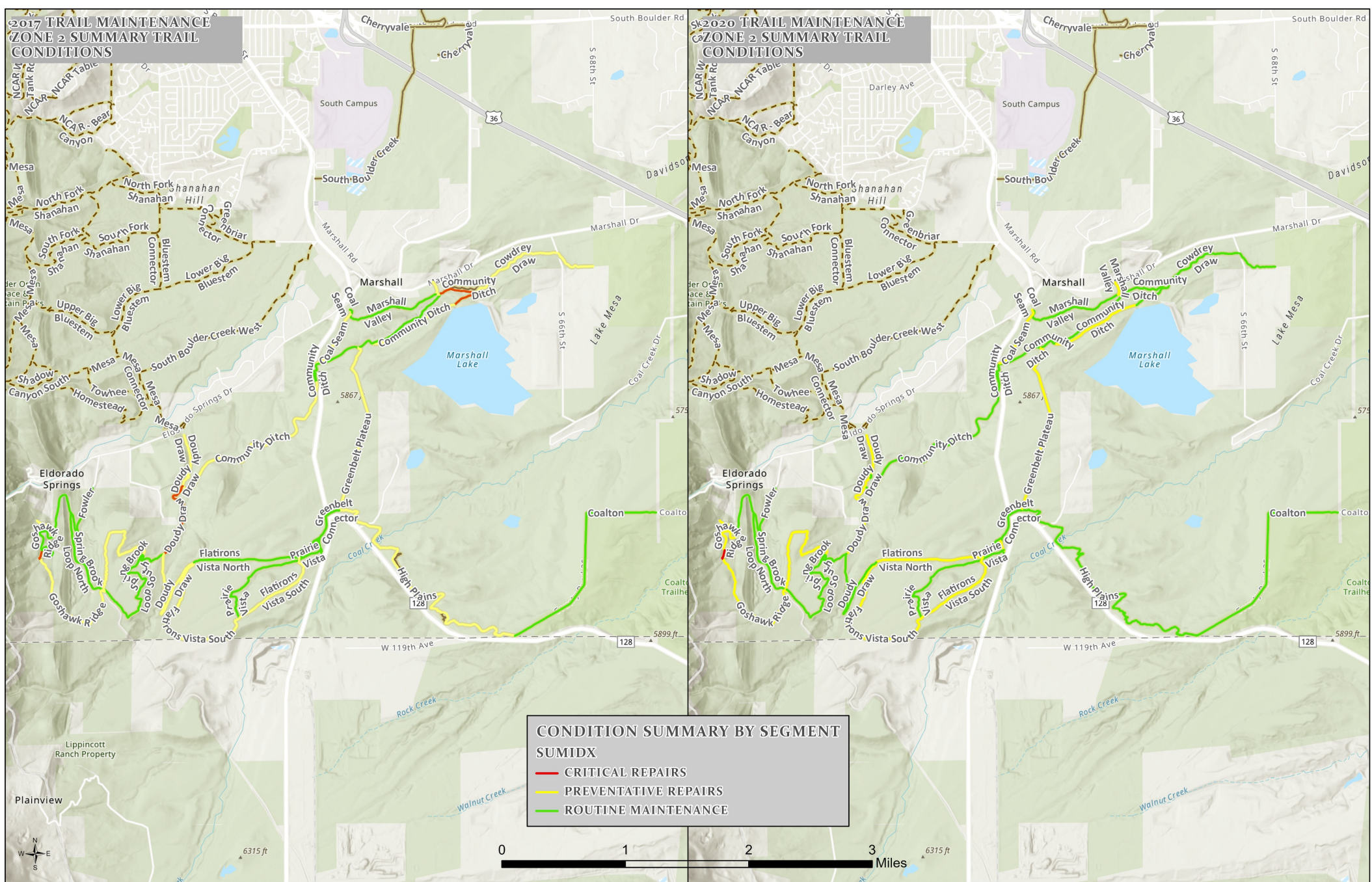


# TRAIL CONDITION MONITORING



The trail research program conducts trail condition monitoring on a 5-year cycle. Using the High Efficiency Trail Assessment Program (HETAP), grade, outslope, width, surface type and firmness, a photo, and problems such as soil loss are recorded at ~20 ft intervals. The condition of built infrastructure (such as steps, walls, and bridges) is also inspected and recorded. From this data, each trail segment is given a condition score that can be seen below. Each trail is evaluated based on separate trail standards. 2020 monitoring focused on trail maintenance zone 2 in the southern part of the system



The Community Ditch trail was rerouted in 2020 dramatically improving the condition score. The old alignment was eroding rapidly and had extensive braiding and widening issues.



Marshall Valley trail near the Marshall Mesa Trailhead has widened since last being surveyed in 2017 and as a result has had a decline in condition score.

