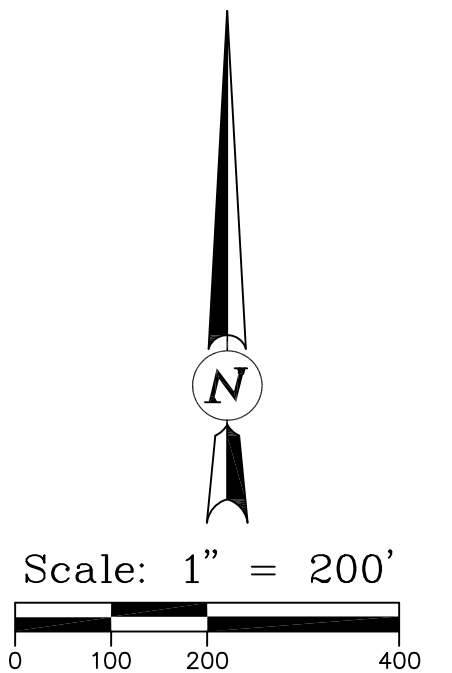


LEGEND

- SS —○— SS EXISTING SANITARY SEWER W/MANHOLE
- SS —●— SS PROPOSED SANITARY SEWER W/MANHOLE
- W —○— W EXISTING WATER W/FIRE HYDRANT
- W —●— W PROPOSED WATER W/FIRE HYDRANT
- 5225 — EXISTING CONTOUR
- x 25.25 EXISTING SPOT ELEVATION
- ⊗ EXISTING WATER VALVE
- WM EXISTING WATER METER
- ⊗ PROPOSED WATER VALVE
- WM PROPOSED WATER METER

UTILITY NOTES

- ALL CITY UTILITIES SHALL BE CONSTRUCTED IN ACCORDANCE WITH THE CITY OF BOULDER STANDARD SPECIFICATIONS.
- WATER, FIRELINE, SEWER TAPS, AND SERVICE LINE SIZES SHALL BE DETERMINED AT THE TIME OF BUILDING PERMIT APPLICATION.
- ALL NEW WATER AND SANITARY SEWER SERVICE TAPS TO EXISTING MAINS SHALL BE MADE BY CITY CREWS AT THE DEVELOPER'S EXPENSE.
- ALL CONNECTIONS TO EXISTING UTILITIES SHALL BE DONE IN A WAY SO AS TO MINIMIZE DISRUPTION IN SERVICE TO EXISTING USERS.
- THE LOCATION OF THE ABOVE GROUND UTILITIES SHOWN HEREON ARE BASED ON THE FIELD SURVEY BY SCOTT, COX & ASSOCIATES, INC. THE LOCATIONS OF THE UNDERGROUND UTILITIES SHOWN HEREON ARE BASED ON SAID SURVEY AND INFORMATION PROVIDED BY OTHERS (WHICH MAY INCLUDE THE UTILITY OWNER OR UTILITY LOCATING SERVICES). SCOTT, COX & ASSOCIATES, INC. IS NOT RESPONSIBLE FOR UTILITY INFORMATION PROVIDED BY OTHERS. SCOTT, COX & ASSOCIATES, INC. RECOMMENDS THAT THE LOCATION OF THE UTILITIES BE FIELD VERIFIED PRIOR TO ANY DIGGING ON, OR ADJACENT TO THE SUBJECT PROPERTY.

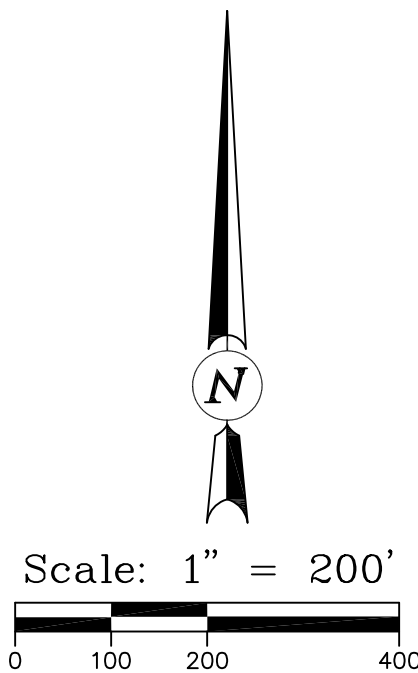
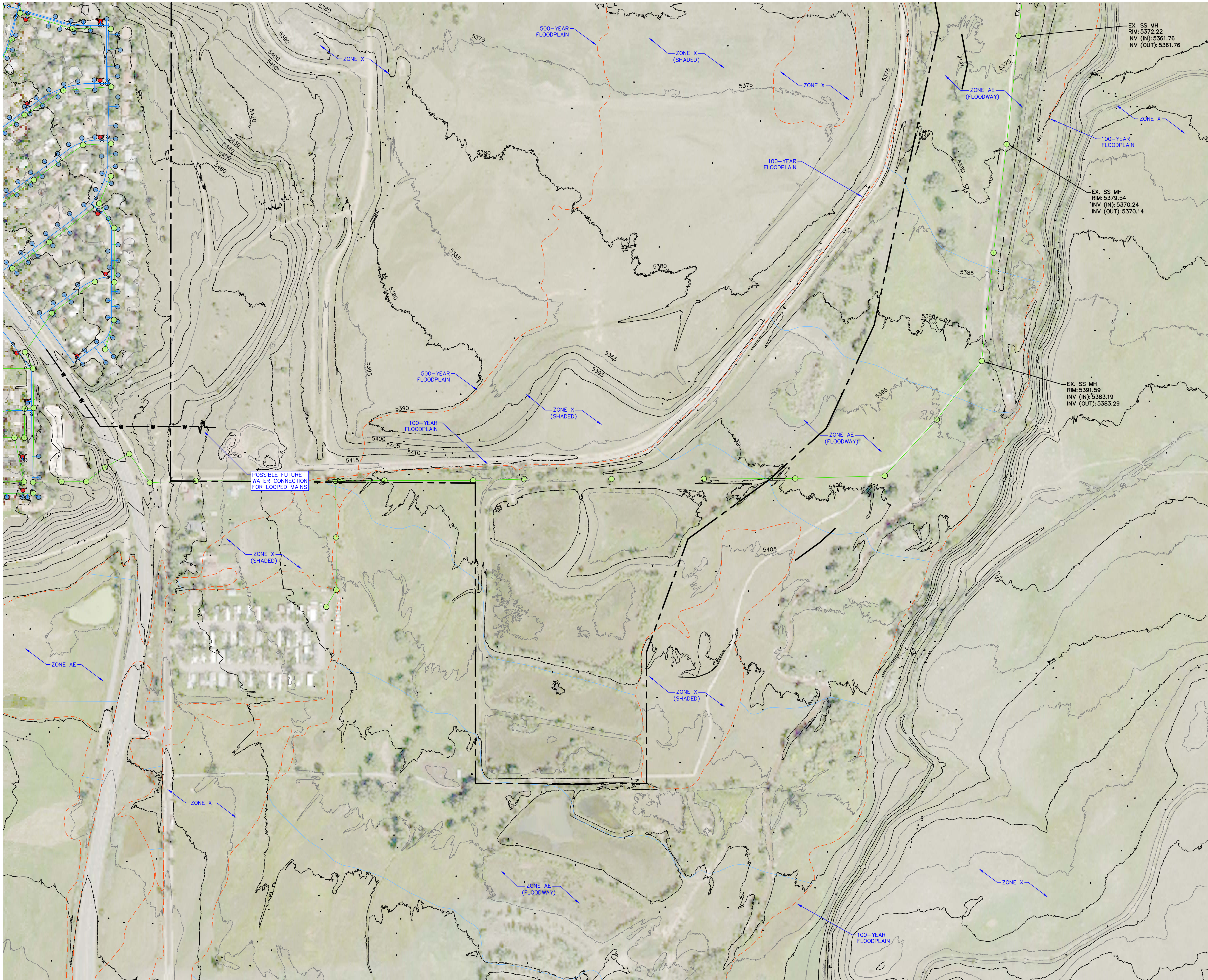


UTILITY CONNECTION PLAN
CU SOUTH
UNIVERSITY OF COLORADO
BOULDER COUNTY, COLORADO



SCOTT, COX & ASSOCIATES, INC.
consulting engineers • surveyors
1530 55th Street • Boulder, Colorado 80303
(303) 444 - 3051

Designed by	DPA	Date	01/21/19	Scale	1"=200'	Drawing no.	18492B-1	Sheet	C1.01
Drawn by	JAS	Revision		Description		Date		Project no.	18492A
Checked by	DPA								



UTILITY CONNECTION PLAN
CU SOUTH
UNIVERSITY OF COLORADO
BOULDER COUNTY, COLORADO



SCOTT, COX & ASSOCIATES, INC.
consulting engineers • surveyors
1530 55th Street • Boulder, Colorado 80303
(303) 444 - 3051

Designed by	DPA	Date	01/21/19	Scale	1"=200'	Drawing no.	18492B-1	Sheet	C1.01
Drawn by	JAS	Revision		Description		Date		Project no.	18492A
Checked by	DPA								