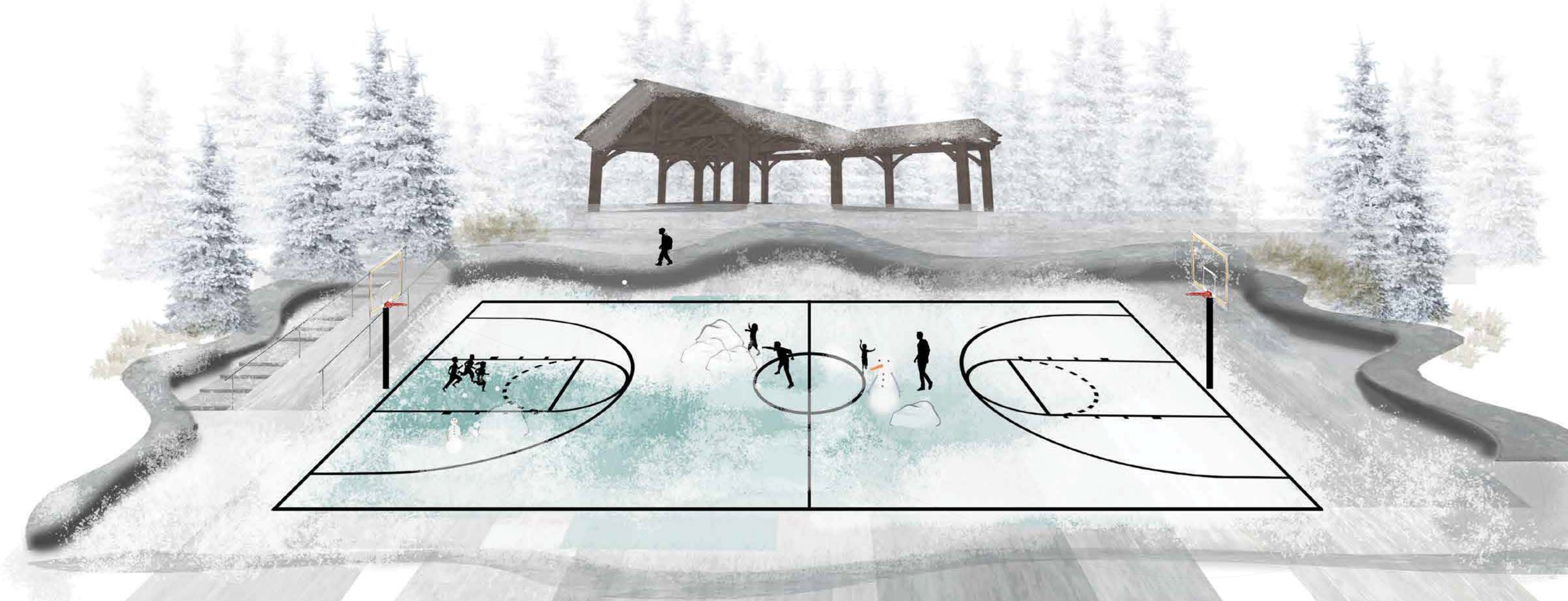
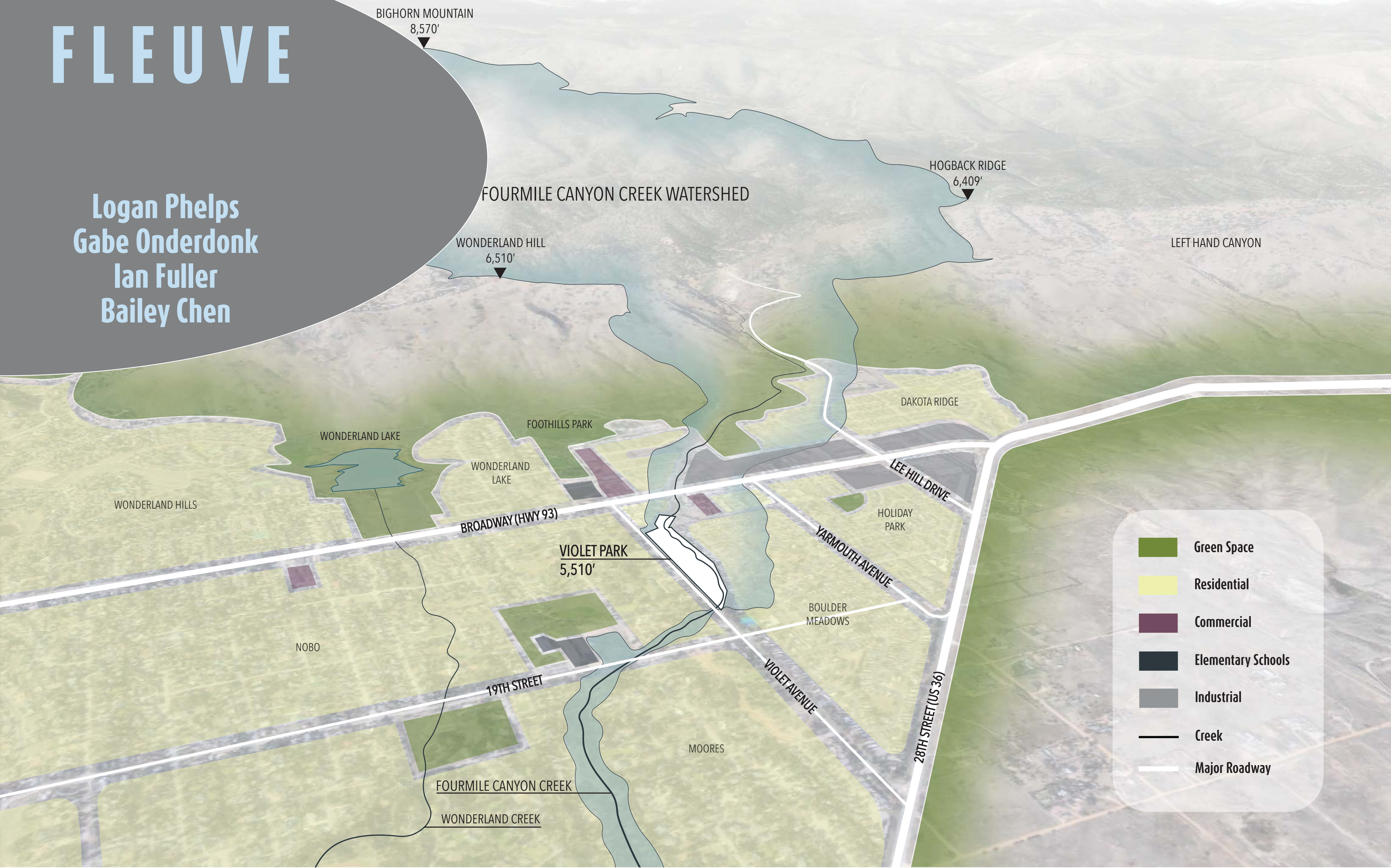
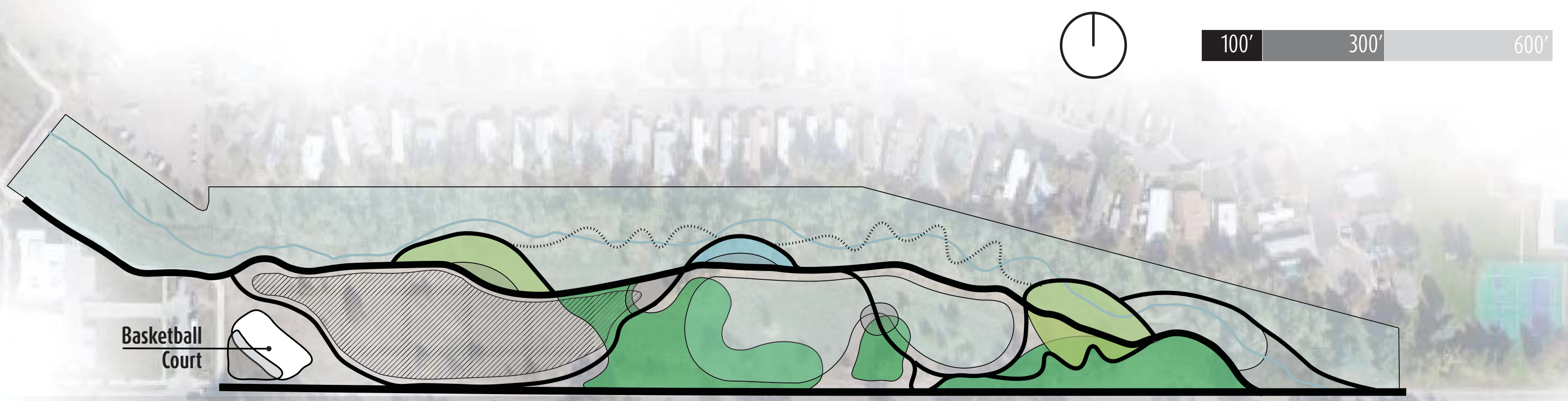


FLEUVE

Logan Phelps
Gabe Onderdonk
Ian Fuller
Bailey Chen

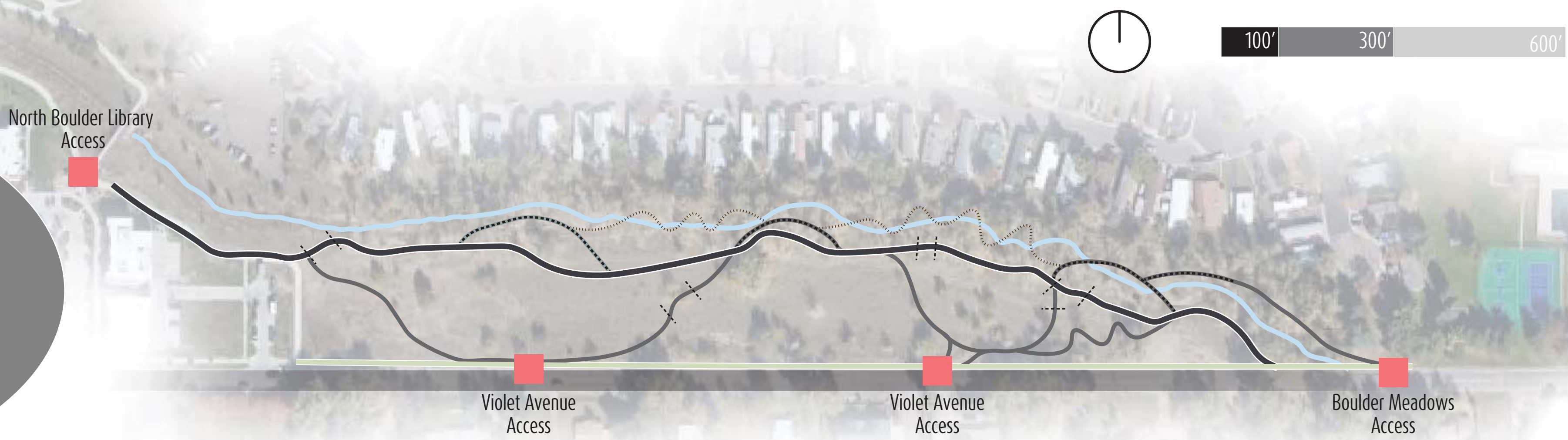


Recreation



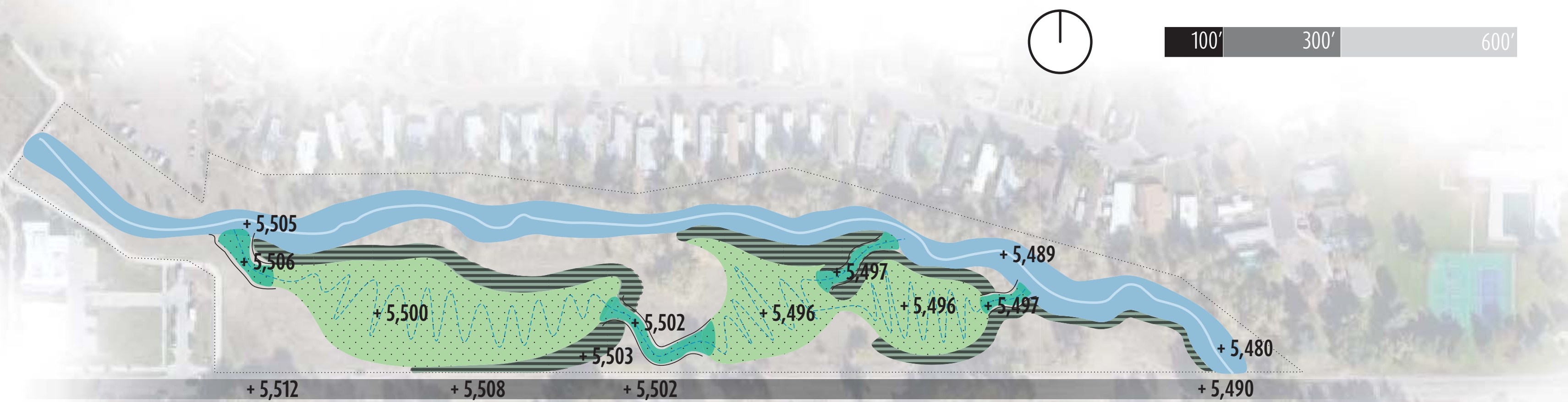
- Four Mile Canyon Creek
- Violet Avenue
- Observation
- Outdoor Classroom
- Discovery Zone
- Transformation Zone
- Gathering Spaces
- Multi-Use Field

Circulation



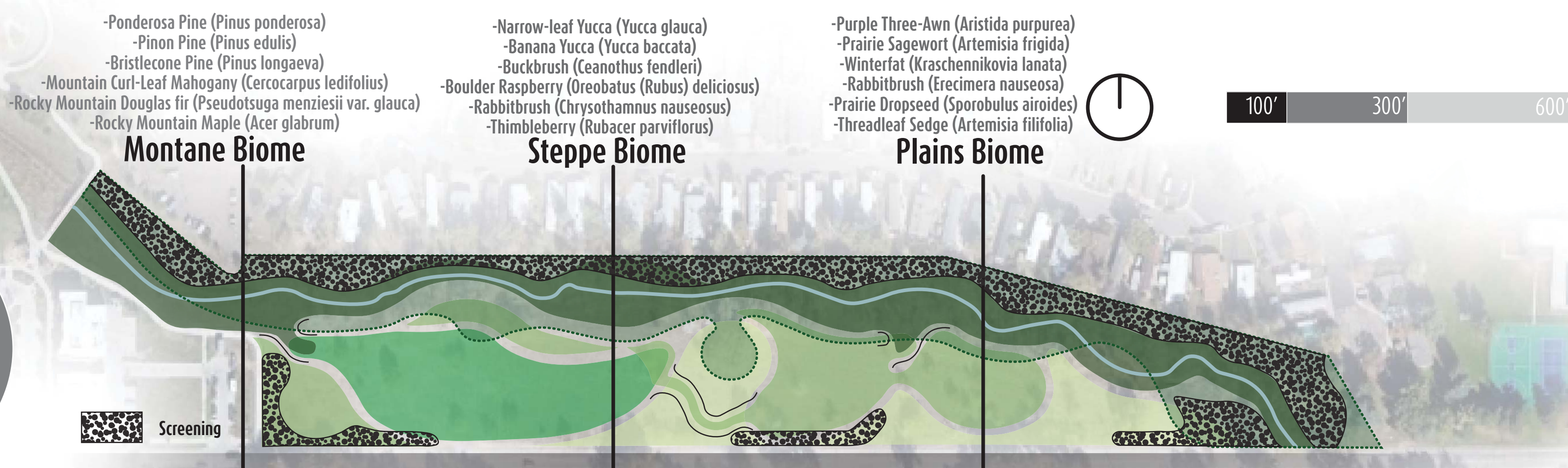
- Four Mile Canyon Creek
- Violet Avenue
- Crusher Fines
- Boardwalk
- Multi-Use Path
- River
- Sidewalk
- Access Points

Stormwater



- Four Mile Canyon Creek
- Violet Avenue
- Bioretention Basin
- Extents of Creek Bed
- Bioswale
- Overflow path
- Cut
- Fill

Ecological



- Riparian Corridor**
- Prairie Cordgrass (*Spartina pectinata*)
 - Slender wheatgrass (*Elymus trachycaulus*)
 - Wild Geranium (*Geranium caespitosum*)
 - Swamp Milkweed (*Asclepias incarnata*)
 - Red Blanketflower (*Gaillardia aristata*)
 - Kinnikinnick (*Arctostaphylos uva-ursi*)
 - Red Berried Elder (*Sambucus microbotrys*)
 - Coyote Willow (*Salix exigua*)



- Cottonwood Marsh**
- Red Osier Dogwood (*Swida sericea*)
 - Twinberry Honeysuckle (*Distegia involucrata*)
 - Chokecherry (*Padus virginiana*)
 - Narrow-leaf cottonwood (*Populus angustifolia*)
 - Box Elder (*Acer negundo*)
 - Golden Currant (*Ribes aureum*)
 - Wild Mint (*Mentha canadensis*)
 - Yarrow (*Achillea millefolium*)



- Pollinator Grasslands**
- Blue Grama (*Bouteloua gracilis*)
 - Aspen Daisy (*Erigeron speciosus*)
 - Black eyed Susan (*Rudbeckia hirta*)
 - Purple Coneflower (*Echinacea purpurea*)
 - Pitcher Sage (*Salvia azurea*)
 - Dotted Gayfeather (*Liatris punctata*)
 - Tenpetal blazingstar (*Mentzelia decapetala*)
 - Purple Three-Awn (*Aristida purpurea*)



- Shortgrass Prairie**
- Blue Grama (*Bouteloua gracilis*)
 - Purple Three-Awn (*Aristida purpurea*)
 - Sideoats Grama (*Bouteloua curtipendula*)
 - Hairy Grama (*Bouteloua hirsuta*)
 - Little Bluestem (*Schizachyrium scoparium*)
 - Threadleaf Sedge (*Artemisia filifolia*)
 - Prairie Sagewort (*Artemisia frigida*)
 - Winterfat (*Kraschennikovia lanata*)



plants include but are not limited to;



- Four Mile Canyon Creek
- Violet Avenue
- Discovery Zones
- Multi-use field/upper retention basin
- Lower Retention basin
- Active Recreation (Basketball Courts)
- Outdoor Classroom
- Bioswale
- Gathering Spaces
- Passive Play Area
- Crossing Bridges