

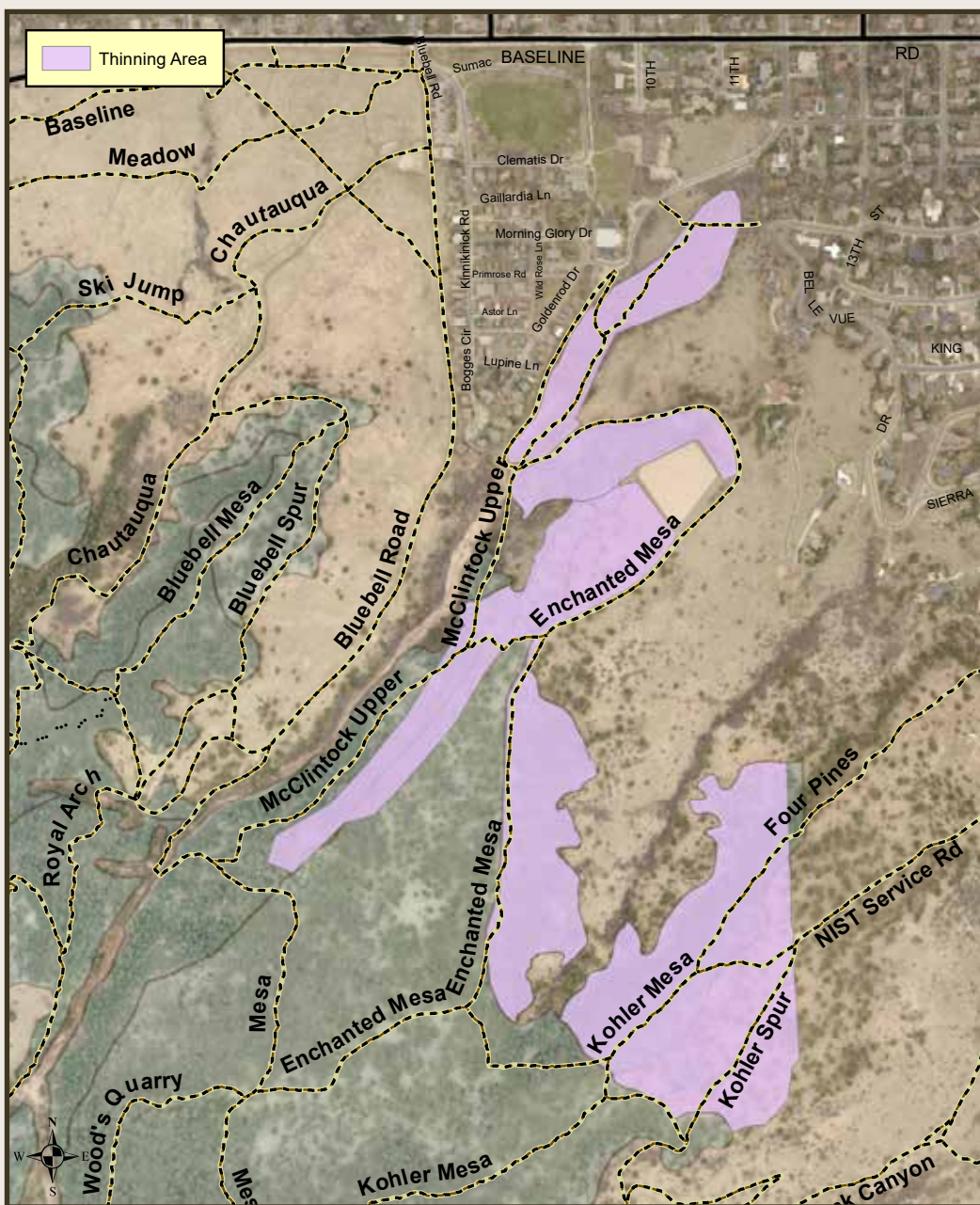


# Forest Restoration

***FOR YOUR SAFETY, do not approach machinery or sawyers while they are cutting.***

**We will be conducting forest thinning operations in the Enchanted Mesa area in spring 2021.**

Thinning will focus on removing small diameter trees to restore the ponderosa pine forest closer to natural open conditions, reducing risk of wildfire. Open forest conditions are less susceptible to an intense wildfire, more resistant to insects like mountain pine beetle, and provide more suitable habitat for many plants and animals such as Abert's Squirrels.



Current forest conditions are the result of historic fire suppression. Ponderosa pines are adapted to regular, low intensity fires and would naturally have a more open structure.



For more information please visit [www.osmp.org](http://www.osmp.org) or call 303 441 3440.

ENJOY.  
DISFRUTA.



PROTECT.  
PROTEGE.