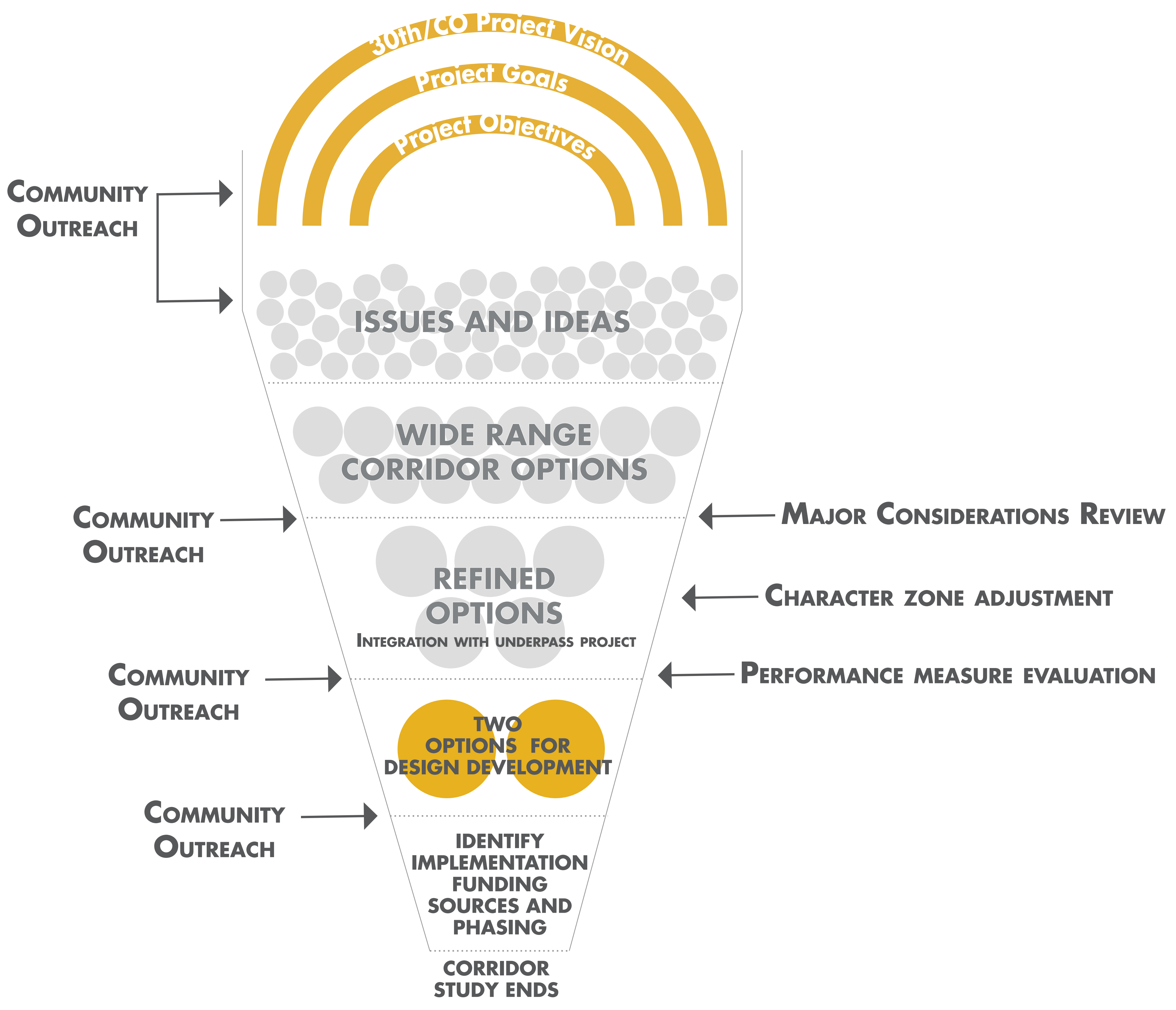


EVALUATION APPROACH

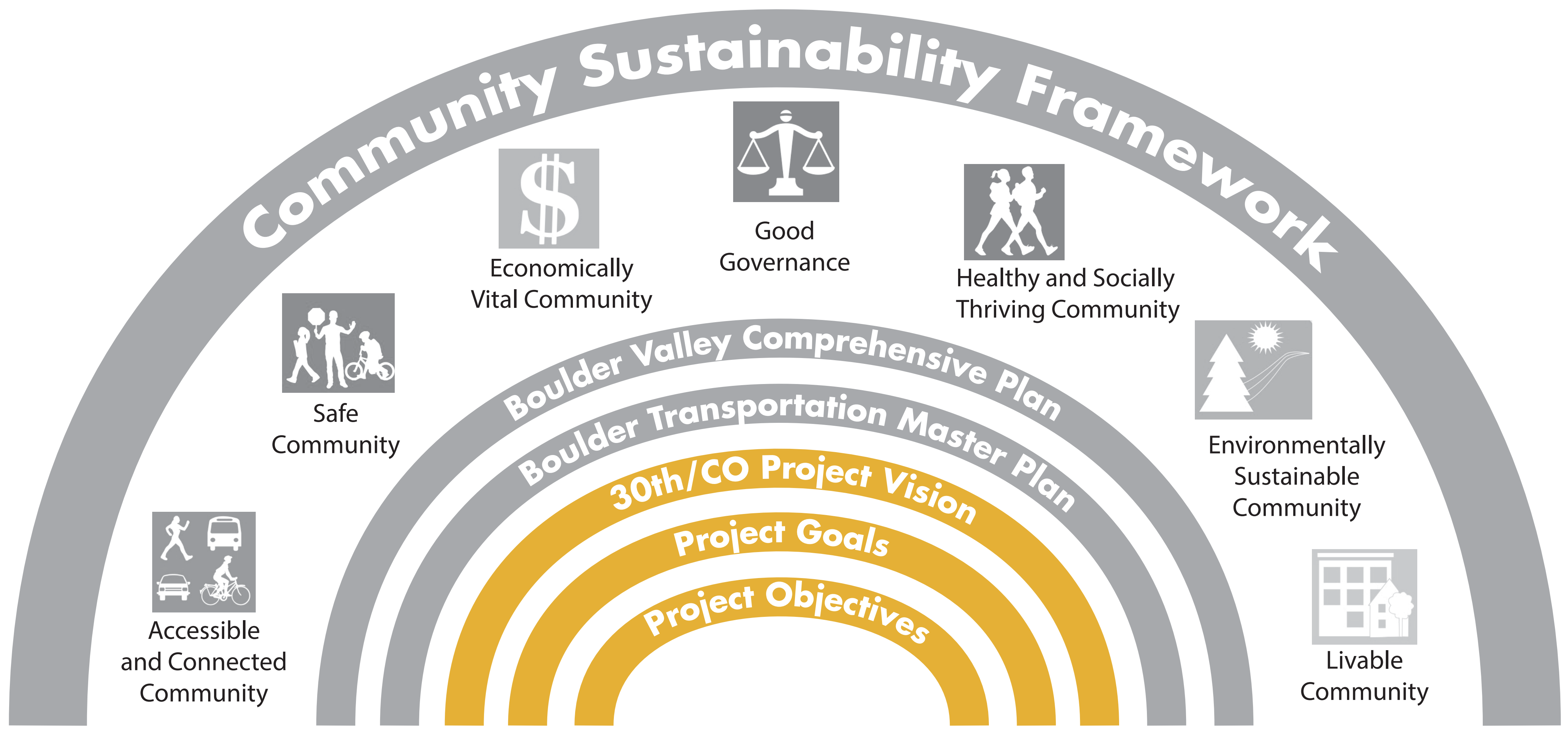
THE EVALUATION PROCESS BEGINS WITH A FULL RANGE OF VISIONARY AND CREATIVE OPTIONS. THEN AS EACH OPTION IS IDENTIFIED IT IS EVALUATED TO UNDERSTAND HOW IT PERFORMS RELATIVE TO THE PROJECT OBJECTIVES IDENTIFIED BY CITY STAFF, THE COMMUNITY WORKING GROUP, AND THE COMMUNITY. THE GRAPHIC BELOW PROVIDES A SUMMARY OF HOW OPTIONS ARE GENERATED AND EVALUATED TO PRODUCE THE CONCEPTUAL DESIGN FOR THE CORRIDORS.



CORRIDOR STUDY FRAMEWORK

THE 30TH AND COLORADO CORRIDORS STUDY PROJECT TEAM PREPARED A VISION STATEMENT AND GOALS AND OBJECTIVES WHICH REFLECTS COMMUNITY INPUT AND FEEDBACK FROM THE STUDY'S COMMUNITY WORKING GROUP. THE GRAPHIC BELOW PROVIDES A SUMMARY OF HOW THIS PROJECT FITS INTO THE CITY OF BOULDER'S FRAMEWORK.

BOULDER'S COMMUNITY SUSTAINABILITY FRAMEWORK HAS SEVEN BROAD CATEGORIES AS OUTCOMES NECESSARY FOR BOULDER'S VISION OF A GREAT COMMUNITY.



BOULDER TRANSPORTATION MASTER PLAN: SETS MULTIMODAL TRANSPORTATION PROJECTS AND PROGRAMS WITHIN THE CONTEXT OF THE BROADER COMMUNITY GOALS TO PROTECT THE NATURAL ENVIRONMENT AND ENHANCE BOULDER'S QUALITY OF LIFE.

30TH/CO PROJECT VISION: THE DESIRED FUTURE STATE OF THE CORRIDORS.

PROJECT GOALS: OUTLINES HOW THE VISION COULD BE ACCOMPLISHED.

PROJECT OBJECTIVES: SPECIFIC DESCRIPTIONS OF INTENTIONS TO REACH THE GOALS. THEY ARE TYPICALLY MORE SPECIFIC THAN THE GOALS AND ABLE TO BE MEASURED USING RELATED PERFORMANCE MEASURES

BOULDER VALLEY COMPREHENSIVE PLAN: LONG-RANGE PLANNING GUIDE TO HELP THE COMMUNITY CREATE AND PRESERVE A SUSTAINABLE FUTURE FOR THE BOULDER VALLEY.