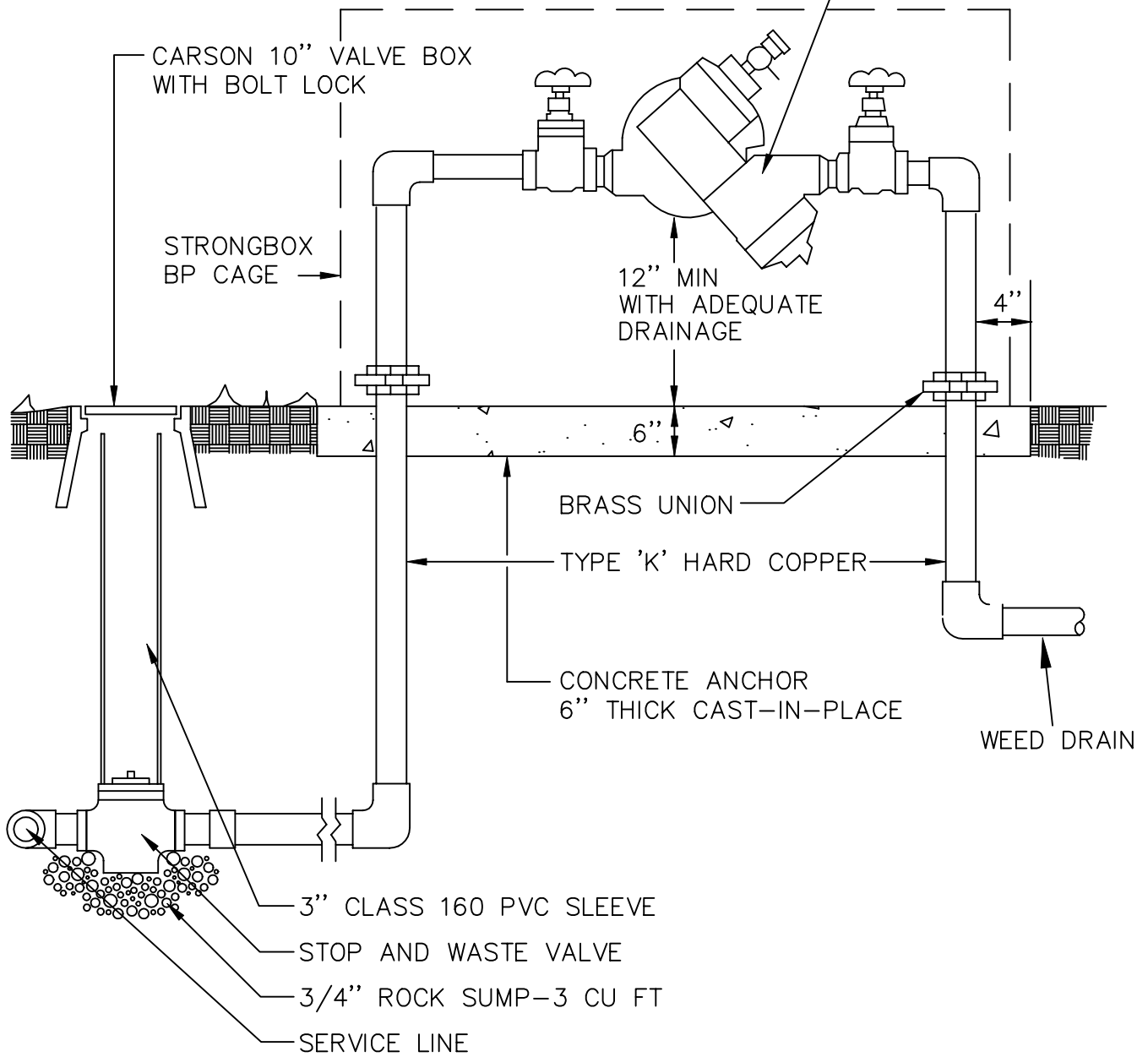


FEBCO REDUCED PRESSURE BACKFLOW ASSEMBLY



NOTES:

1. STOP AND WASTE VALVES CREATE A POTENTIAL CROSS CONNECTION PRIOR TO THE PRIOR TO THE BACK FLOW ASSEMBLY.
2. EXTEND AIPGAP ONE FOOT FROM BOTTOM OF STOP AND WASTE TO GRAVEL.

DRAWN BY: JSH

CHECKED BY: RJH

APPROVED BY:
DIRECTOR OF PUBLIC WORKS

CITY OF BOULDER, COLORADO
IRRIGATION
REDUCED PRESSURE
BACKFLOW ASSEMBLY

ISSUED: JULY 2, 1998

REVISED: OCT. 17, 2000

DRAWING NO.

3.22