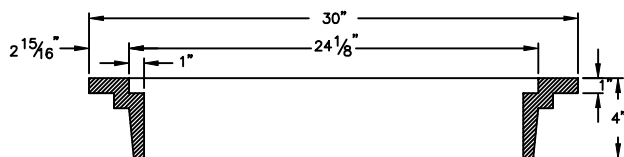
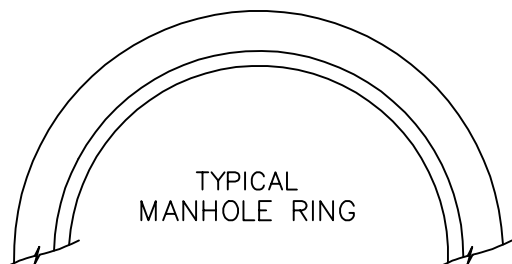
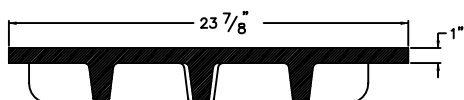
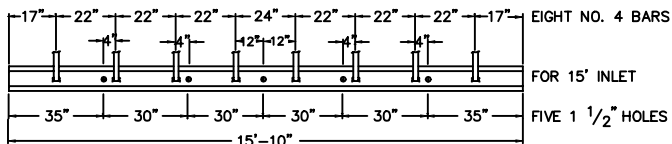
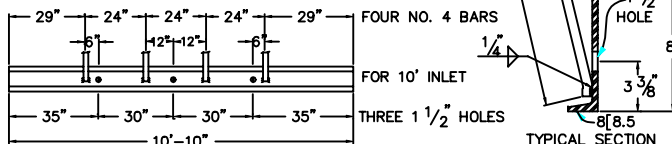
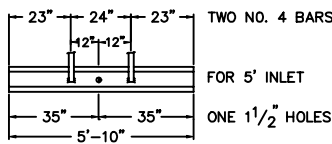


GENERAL NOTES

ALL CONCRETE SHALL BE CLASS A OR B
 CONCRETE WALLS SHALL BE FORMED ON BOTH SIDES AND SHALL BE 8" THICK.
 INLET STEPS SHALL BE IN ACCORDANCE WITH AASHTO M 199.
 CURB FACE ASSEMBLY SHALL BE GALVANIZED AFTER WELDING.
 EXPOSED CONCRETE CORNERS SHALL BE CHAMFERED $\frac{3}{4}$ " CURB AND GUTTER CORNERS SHALL BE FINISHED TO MATCH THE EXISTING CURB AND GUTTER BEYOND THE TRANSITION GUTTER.
 REINFORCING BARS SHALL BE DEFORMED AND SHALL HAVE A 2" MINIMUM CLEARANCE.
 DIMENSIONS AND WEIGHTS OF TYPICAL MANHOLE RING AND COVER ARE NOMINAL. MATERIAL FOR MANHOLE RINGS AND COVERS SHALL BE GRAY OR DUCTILE CAST IRON CONFORMING TO 712.06.
 SINCE PIPE ENTRIES INTO THE INLET ARE VARIABLE, THE DIMENSIONS SHOWN ARE TYPICAL. ACTUAL DIMENSIONS AND QUANTITIES FOR CONCRETE AND REINFORCEMENT SHALL BE AS REQUIRED IN THE WORK. QUANTITIES INCLUDE VOLUMES OCCUPIED BY PIPES.
 STRUCTURAL STEEL SHALL BE GALVANIZED AND SHALL CONFORM TO THE REQUIREMENTS OF 712.06.



WEIGHTS: COVER = 125 LBS.
 RING = 135 LBS.
 TOTAL = 260 LBS.



CHANNEL LAYOUT DETAILS

DRAWN BY: CSM
 CHECKED BY: RJH

APPROVED BY:
 DIRECTOR OF PUBLIC WORKS

CITY OF BOULDER, COLORADO
 TYPE R
 CURB INLET

ISSUED: JULY 2, 1998
 REVISED: OCT. 17, 2000

DRAWING NO.

7.08D