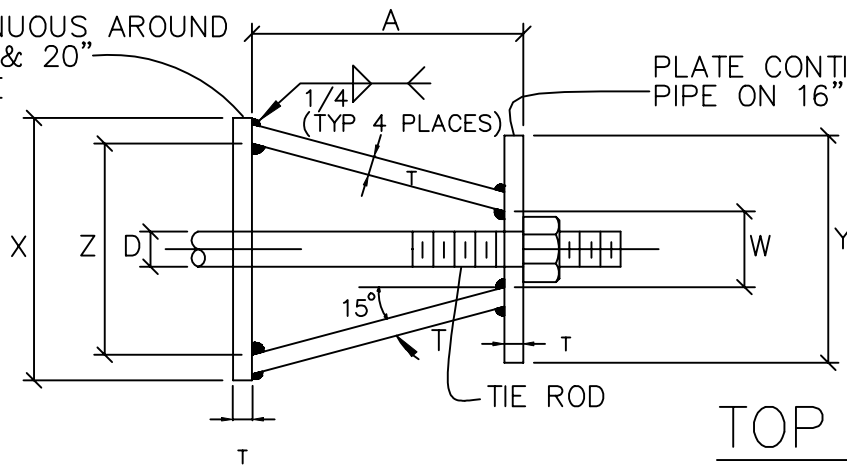
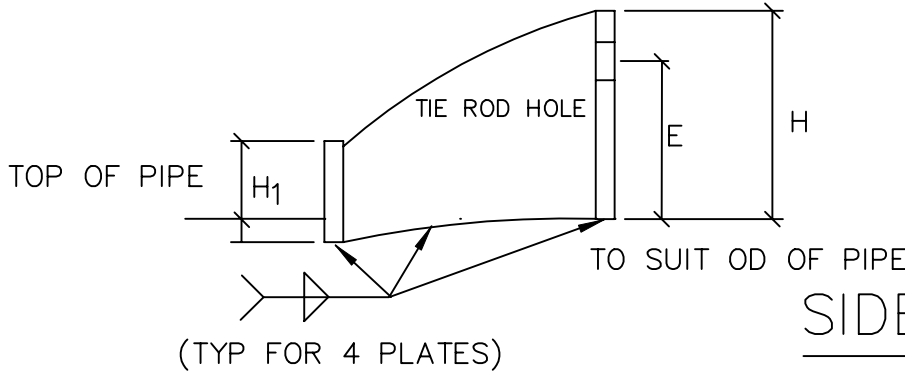


PLATE CONTINUOUS AROUND
PIPE ON 16" & 20"
AND 24" PIPE



TOP VIEW



SIDE VIEW

	CARRIER PIPE NOMINAL DIA.	ROD DIA. D	A	W	Z	T	H	E	H ₁	Y	X
W/O FLANGED LUGS	4" TO 12"	3/4"	5"	1 1/2"	3 3/4"	3/8"	4 1/8"	3 1/8"	2"	4 1/2"	5"
	16"	1"	5 3/4"	1 3/4"	4 7/16"	1/2"	4 1/2"	3 1/4"	2"	RING	RING
	20"	1 1/4"	7 1/2"	2"	5 1/2"	5/8"	5"	3 3/4"	2 1/2"	RING	RING
WITH FLANGED LUGS	4"	3/4"	5"	1 1/2"	3 3/4"	3/8"	4 1/8"	3 1/2"	2"	4 1/2"	5"
	6"	3/4"	5"	1 1/2"	3 3/4"	3/8"	4 1/8"	3 11/16"	2"	4 1/2"	5"
	8"	3/4"	5"	1 1/2"	3 3/4"	3/8"	4 1/8"	4 5/16"	2"	4 1/2"	5"
	12"	3/4"	5"	1 1/2"	3 3/4"	1/2"	4 1/8"	4 7/8"	2"	4 1/2"	5"
	16"	1"	5 3/4"	1 3/4"	4 7/16"	1/2"	4 1/2"	5 3/8"	2"	RING	6"
	20"	1 1/4"	7 1/2"	2"	5 1/2"	5/8"	5"	5 1/4"	2 1/2"	RING	RING
	24"	1 1/4"	7 1/2"	2"	5 1/2"	5/8"	5"	5 1/4"	2 1/2"	RING	RING

- NOTES: 1. N = PIPE WALL THICKNESS.
 2. TIE ROD HOLE DIAMETER 1/8" LARGER THAN STUD DIAMETER.
 3. BOTTOM EDGE OF ALL PLATES SHAPED TO FIT OUTSIDE DIAMETER OF PIPE.
 4. FLANGED HARNESS LUGS SHALL BE COATED WITH COAL-TAR ENAMEL.

DRAWN BY: JSH
 CHECKED BY: RJH

APPROVED BY:
 DIRECTOR OF PUBLIC WORKS

CITY OF BOULDER, COLORADO
 COMBINATION FLANGED
 HARNESS LUG DETAILS
 FOR CASING PIPE

ISSUED: JULY 2, 1998
 REVISED: OCT. 17, 2000

DRAWING NO.
 5.08