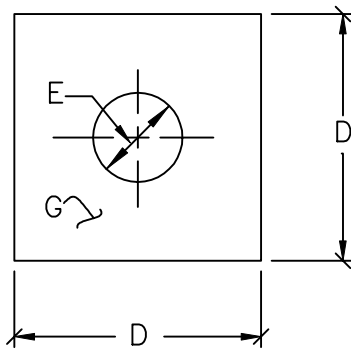


TIE ROD DETAILS



WASHER DETAIL

TIE RODS			
A	B	C	
ROD DIAMETER	THREAD LENGTH	ROD LENGTH	GRADE
3/4" & 1"	6"	1' TO 11' & 20'	MS
3/4" TO 1 1/2"	ALL THREAD	1' TO 11' & 20'	HS

WASHERS		
D	E	G
WIDTH	HOLE DIAMETER	THICKNESS
5"	1/8" LARGER THAN ROD DIA	1/2"
6"	1/8" LARGER THAN ROD DIA	5/8"

NOTES:

1. SEE TIED JOINTS ROD DIMENSIONS DRAWING. NO. 5.03.
2. SEE CLAMP DETAILS AND DIMENSIONS (DRAWING 5.07) FOR PROPER PLACEMENT OF WASHERS.
3. MS=MILD STEEL
HS=HIGH STRENGTH

DRAWN BY: JSH
CHECKED BY: RJH

APPROVED BY:
DIRECTOR OF PUBLIC WORKS

CITY OF BOULDER, COLORADO

TIE ROD AND WASHER
DETAILS

ISSUED: JULY 2, 1998
REVISED: OCT. 17, 2000

DRAWING NO.
5.04