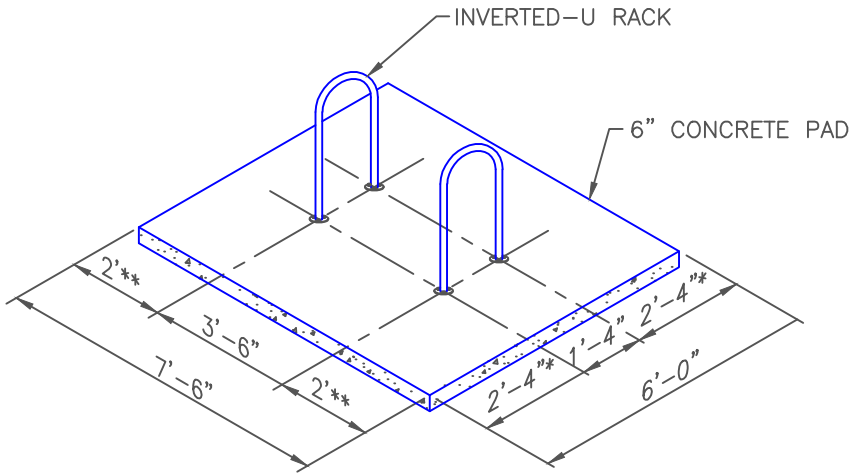
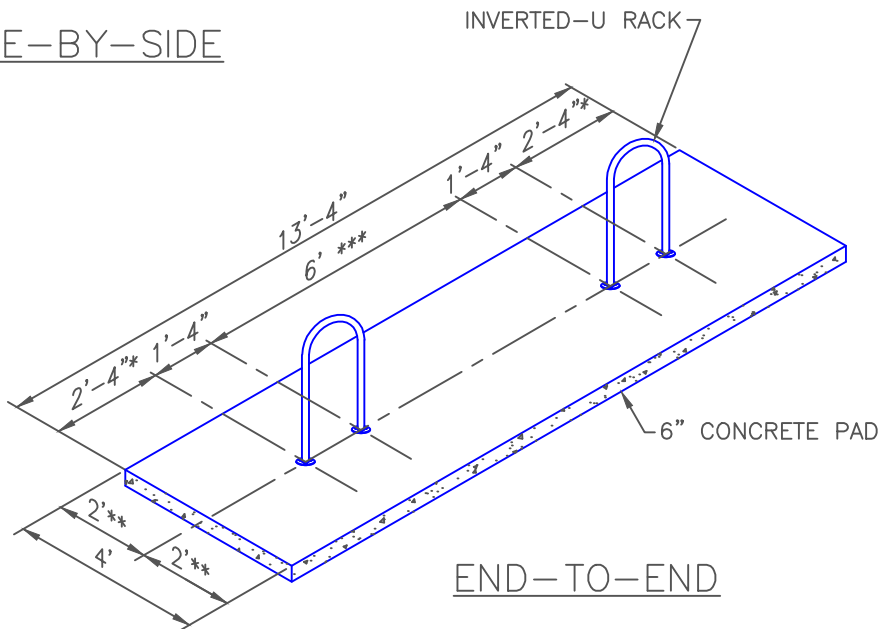


NOTES:

EXPOSED CONCRETE SURFACE TO BE BROOM FINISHED.
 PAD SIZE MAY VARY AS DIRECTED BY THE ENGINEER.
 PAD IS TO BE CONSTRUCTED WITH CLASS B CONCRETE.
 EXCAVATION AND/OR EMBANKMENT REQUIRED FOR PAD
 CONSTRUCTION WILL NOT BE PAID FOR SEPERATELY, BUT
 SHALL BE INCLUDED IN THE COST OF THE PAD. CONCRETE
 SHALL BE SLOPED AT 2% TO DRAIN.



SIDE-BY-SIDE



END-TO-END

* 3'-4" MINIMUM WHEN
 INSTALLED PERPENDICULAR TO
 A WALL OR CURB.

** 3' MINIMUM WHEN INSTALLED
 PARALLEL TO A WALL OR
 CURB. 5' MINIMUM
 SEPARATION FROM CURB FACE
 WHEN INSTALLED ADJACENT TO
 A CURB WITH "HEAD-IN"
 AUTOMOBILE PARKING.

*** 10' MINIMUM IF MORE THAN
 TWO "U" RACKS IN A SERIES.

DRAWN BY: JSH
 CHECKED BY: RJH

APPROVED BY:
 DIRECTOR OF PUBLIC WORKS

CITY OF BOULDER, COLORADO

INVERTED "U"
 BICYCLE RACKS

ISSUED: JULY 2, 1998
 REVISED: OCT 6, 2009

DRAWING NO.
 2.52.B