

water symbols

EXISTING	PROPOSED	description	block name
		FIRE HYDRANT	blocks \
		water meter	fh / new fh
		gate valve	wm / newwm
		butterfly valve	wv / newwv
		air relief valve	bfv / newbfv
		tee	arv / newarv
		cross	tee / newtee
		22 1/2 bend	x / newx
		45° bend	22h / new22h
		90° bend	45 / new45
		reducer	90 / new90
		plug	red / newred
		sleeve	plug
		thrustblock	sleeve
			tblk

linetype LEGEND

EXISTING ITEMS	PROPOSED ITEMS

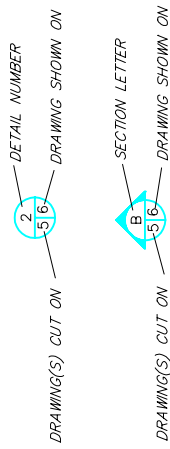
sanitary / storm sewer symbols

EXISTING	PROPOSED	description	block name
		san s manhole	mh / new mh
		clean out	CO / NEWCO
		wye branch	wye / newwye
		san sewer crossing	XING
		storm manhole	STMH / NEWSTMH
		catch basin	cb / NEWcb
		culvert	culv / newculv
		1/2' type inlet	R / NEWR
		CULVERT W/ FES & HEADWALL	fes
		double no. 16 inlet	no16 / new no16

SUBSURFACE / SURFACE FEATURES

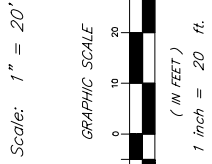
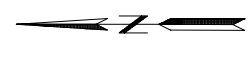
description	block name
	bed
	RIPRAP
	GRADE
	spot
	ASPHALT
	GRAVEL
	CONC
	deciduous tree
	CTREE
	bush
	bus
	mbox
	sign1
	sign2
	embankment
	wet
	grass

plan SYMBOLS



NOTES:

1. the type, size, location and number of all known underground utilities are to be shown on drawings. It is the contractor's responsibility to locate and verify the existing utilities along the route of work and to coordinate construction schedules with these utility owners. the contractor shall note all utilities that may not appear on these plans and that the potential conflict with utilities shall be considered in the preparation of cost estimates and bids. the contractor shall be responsible for protecting utilities during construction and shall hold the City and the engineer harmless for damages arising from failure to adequately protect utilities. Also, it shall be the responsibility of the contractor to schedule utility adjustments to eliminate conflict with progress of the work.



survey symbols

description	block name
	bm
	cp
	pin
	th
	secorn
	qcorn

gas, telephone, power & traffic symbols

	riser
	tvault
	transf
	sigcon
	stlt
	lp
	guy
	pp
	flow
	mast

misc symbols

	hcap
	bike lane