



LEGEND:

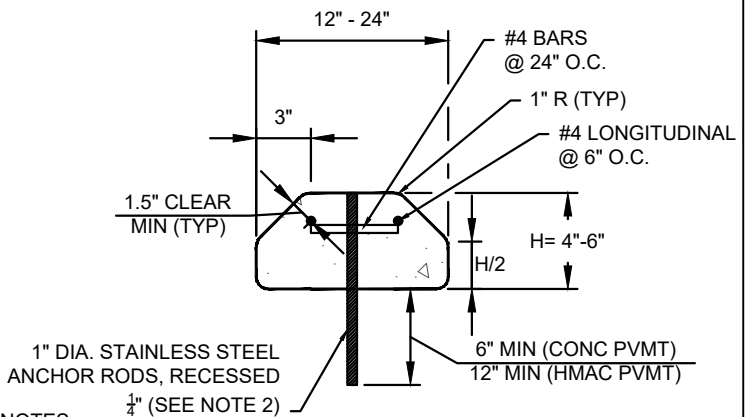
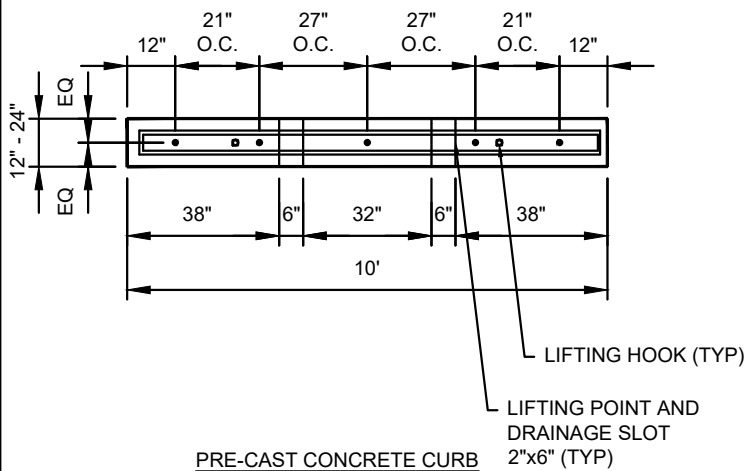
- FLEX POST DELINEATOR
-  GREEN PAVEMENT MARKING WITH EMBEDDED WHITE BIKE SYMBOL
-  DIRECTIONAL INDICATOR STRIP (SEE DETAIL ON NEXT PAGE)

ACCESSIBLE RAMP SLOPE (RMP) = 7.8% TYP (8.3% MAX, 4% MIN)

NOTES:

1. DESIGN PLANS SHOULD BE CONSULTED FOR VARIATIONS
2. SEE CITY OF BOULDER DESIGN AND CONSTRUCTION STANDARDS, SECTION 2.07, TABLE 2.5 FOR STANDARD LANE WIDTHS
3. BIKE LANE TAPERS PREFERRED AT 7:1 SHIFT, MINIMUM 3:1 SHIFT IN CONSTRAINED LOCATIONS WHERE SPEED IS \leq 13 MPH
4. FOR BIKE LANES AT SIDEWALK ELEVATION WITHOUT BUFFER TREATMENT, 1' MINIMUM DIRECTIONAL INDICATOR STRIP WITHIN THE SIDEWALK; TYPICALLY THIS IS LOCATED 1' FROM THE EDGE OF THE BIKE LANE

BIKE RAMP



NOTES:

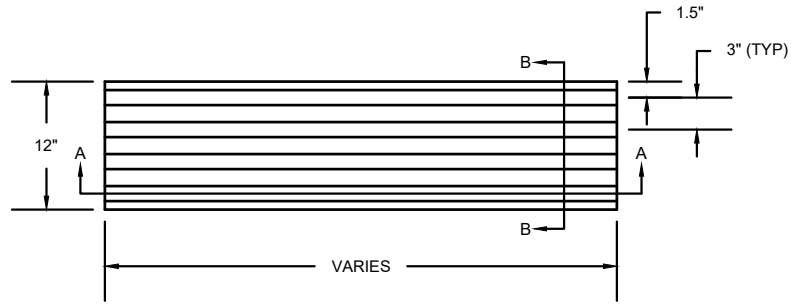
1. DESIGN PLANS SHOULD BE CONSULTED FOR VARIATIONS
2. DRILL AND EPOXY SMOOTH 1" DIA. STAINLESS STEEL ANCHOR RODS. FOR CONCRETE PAVEMENT, ANCHORS SHALL BE A MINIMUM OF 3" CLEAR FROM ALL JOINTS

DRAWN BY: TW
 CHECKED BY: CS
 APPROVED BY:
 DIRECTOR OF PUBLIC WORKS

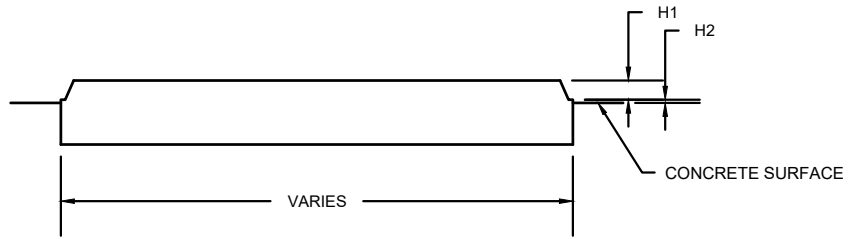
CITY OF BOULDER, COLORADO
 BIKE RAMP &
 PRE-CAST CURB BUFFER

ISSUED: XXX XX, 2021
 REVISED: XXX XX, 2021

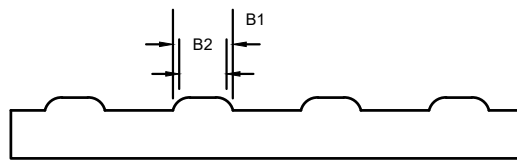
DRAWING NO.
 X.XX.X



PLAN



SECTION A-A



SECTION B-B

DIMENSION	RANGE (IN.)
B1	0.90 - 1.20
B2	B1 + 0.20
H1	0.18 - 0.20
H2	0.05 MAX.

NOTES:

1. DETECTABLE DIRECTIONAL STRIP MUST BE "FEDERAL YELLOW", UNLESS OTHERWISE APPROVED BY THE ENGINEER OF RECORD
2. STRIP CENTERLINE MUST BE PARALLEL TO THE ALIGNMENT OF THE PEDESTRIAN ACCESS ROUTE
3. DESIGN PLANS SHOULD BE CONSULTED FOR VARIATIONS

DRAWN BY: TW
 CHECKED BY: CS
 APPROVED BY:
 DIRECTOR OF PUBLIC WORKS

CITY OF BOULDER, COLORADO

DIRECTIONAL
 INDICATOR STRIP

ISSUED: XXX XX, 2021
 REVISED: XXX XX, 2021

DRAWING NO.

X.XX.X