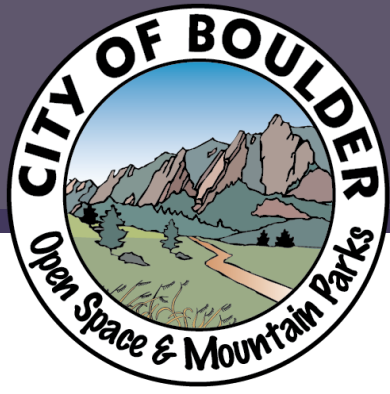


OSBT WATER RESOURCES PROGRAM UPDATE



April 13, 2022

*Jewel Mountain Lake
A. Willhite*

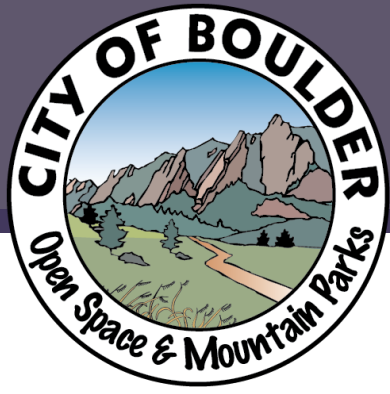


WHO ARE WE?

Amy Willhite, Water Resources Project Manager

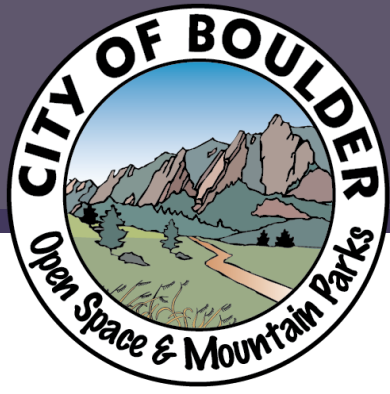
Dustin Allard, Water Resources Program Manager

Cullen Stevens, Water Resources Maintenance Temp

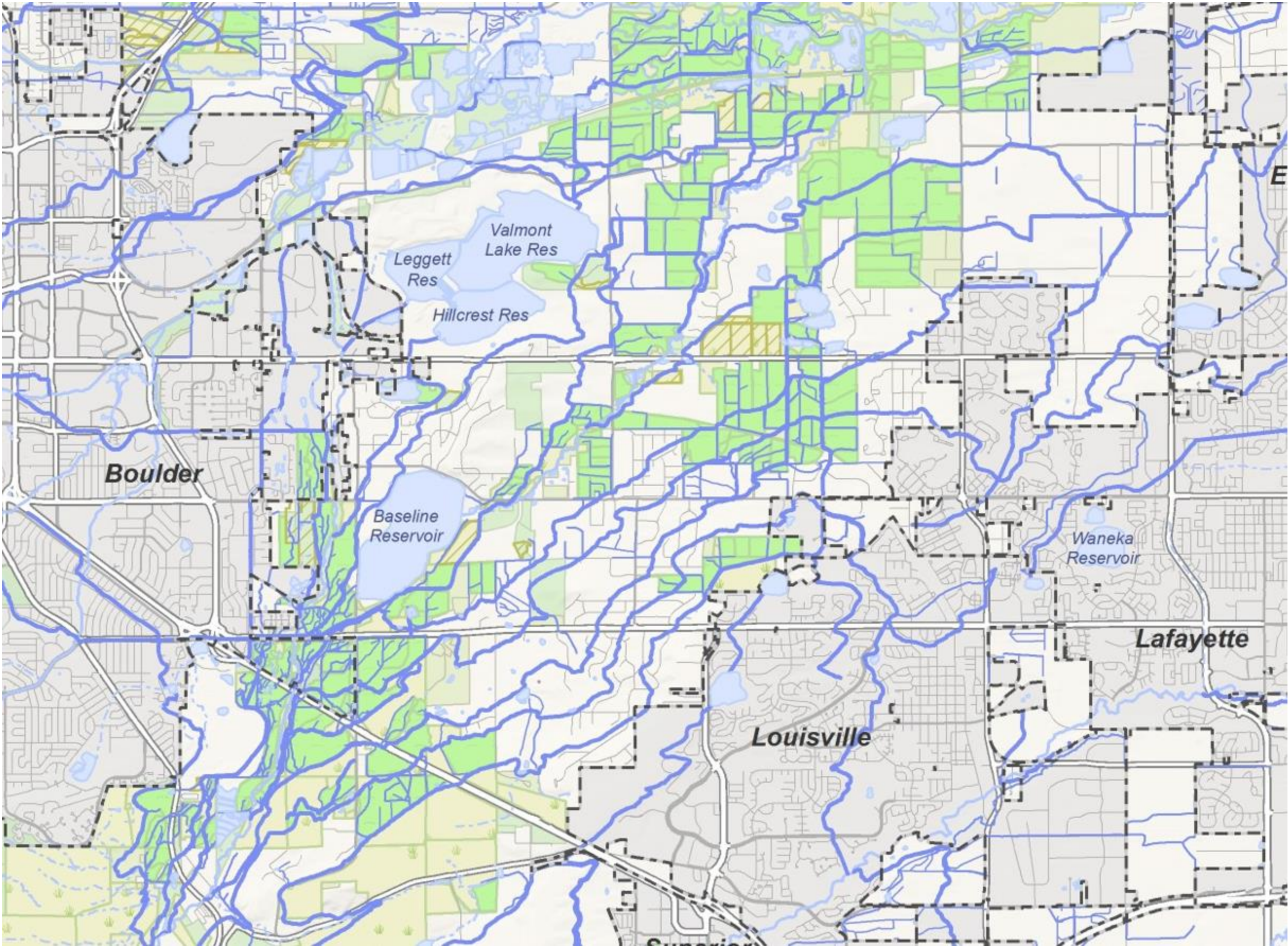


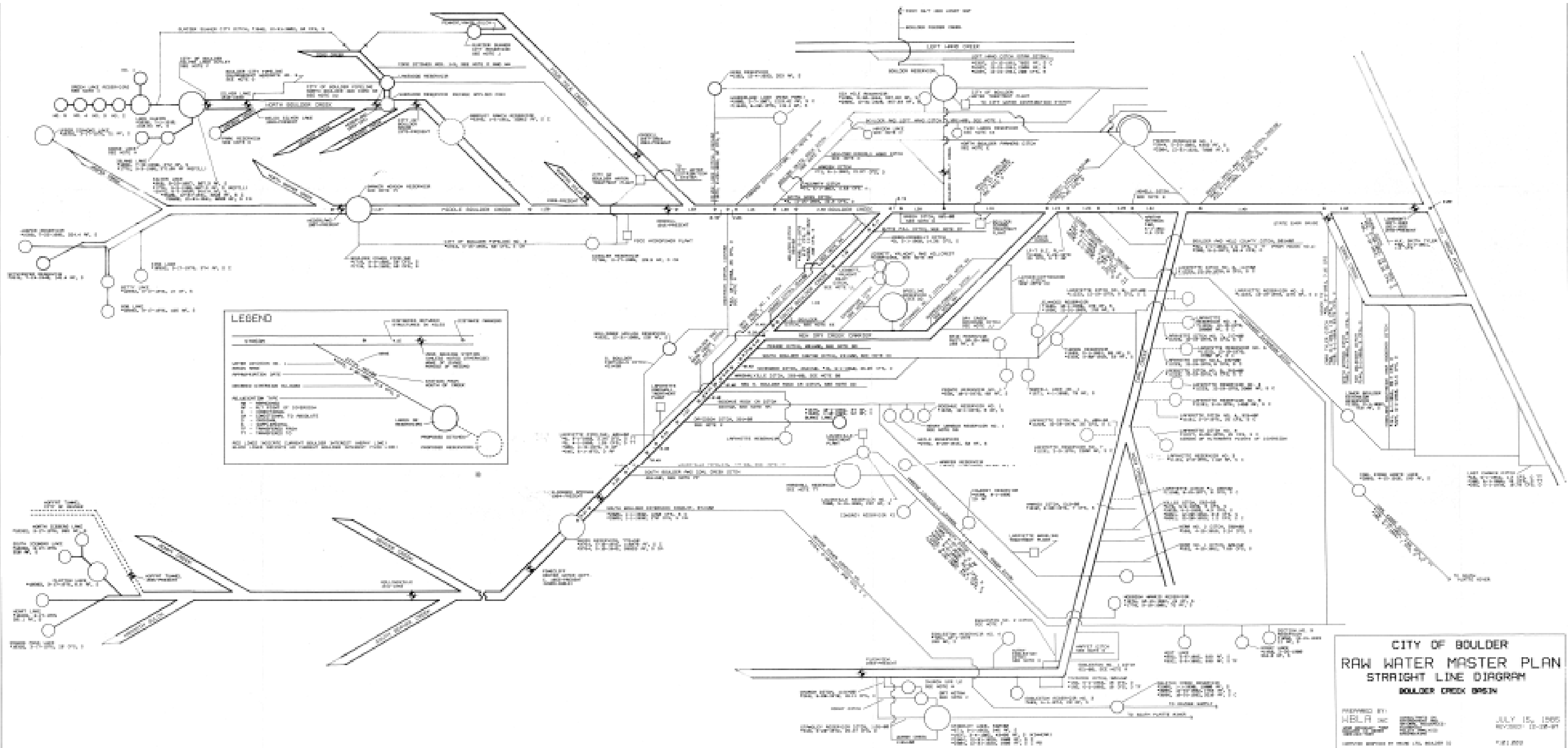
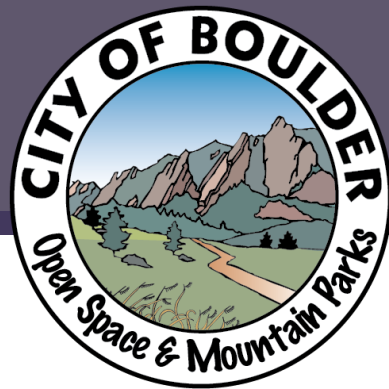
AGENDA

- **WATER ASSETS BY THE NUMBERS**
- **PROGRAM BENEFITS**
- **WATER PROGRAM FUNCTIONAL AREAS**
- **FUNCTIONAL AREA HIGHLIGHTS**
- **CHALLENGES AND FUTURE EFFORTS**



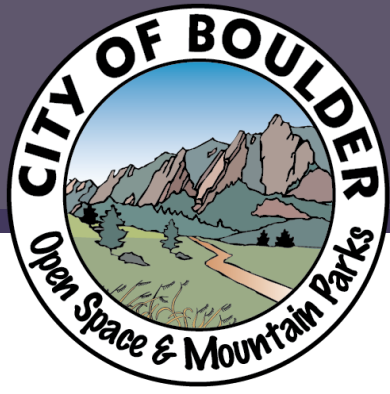
By the Numbers



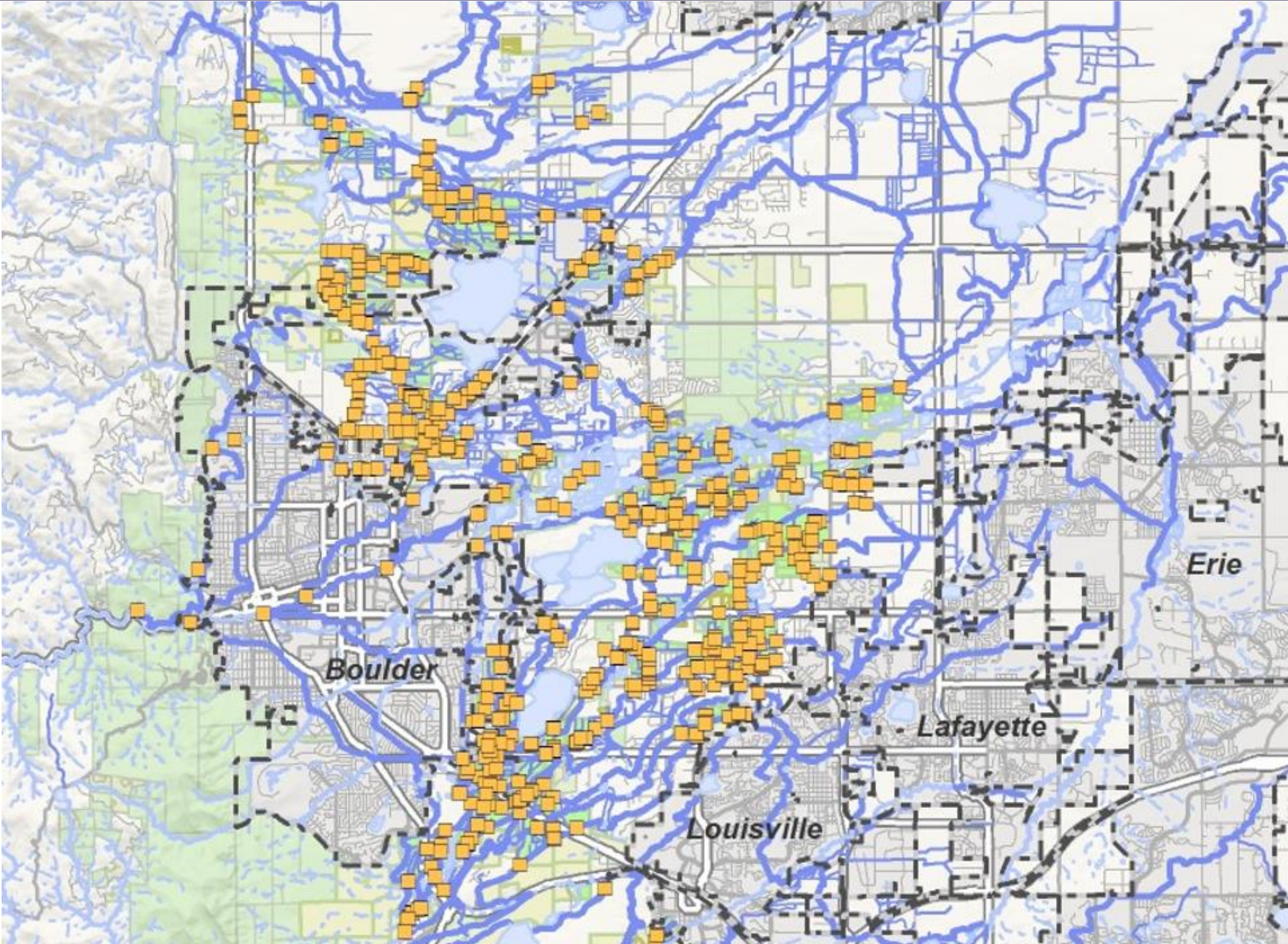


**CITY OF BOULDER
RAW WATER MASTER PLAN
STRAIGHT LINE DIAGRAM
BOULDER CREEK BASIN**

PREPARED BY:
HBLA INC.
JULY 15, 1995
REVISED 12-28-97
1:21,000



By the Numbers



WATER RESOURCES AT OSMP

Program Benefits

Benefits OSMP Water Rights Provide:



Photo credit: Ann Ruggles

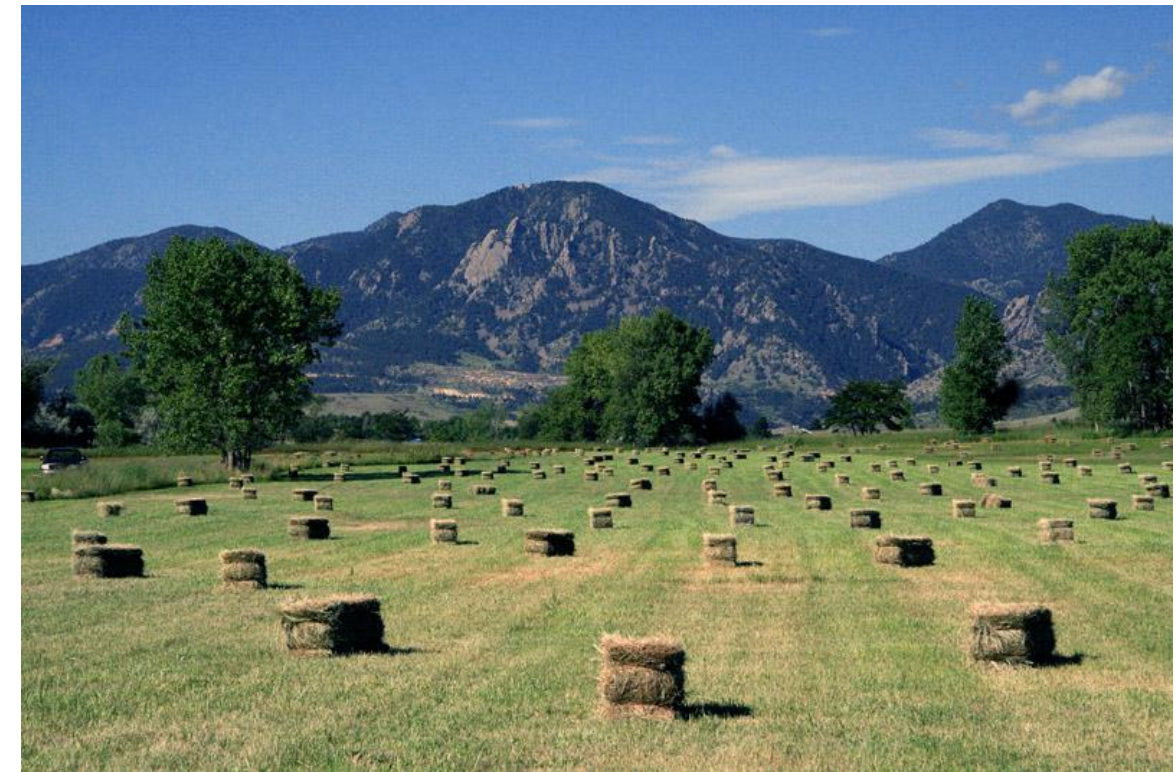


Photo credit: Dave Sutherland

WATER RESOURCES AT OSMP

Programmatic Functional Areas

Administrative



Maintenance



Operations



WATER RESOURCES AT OSMP

Functional Area Highlights

Administrative

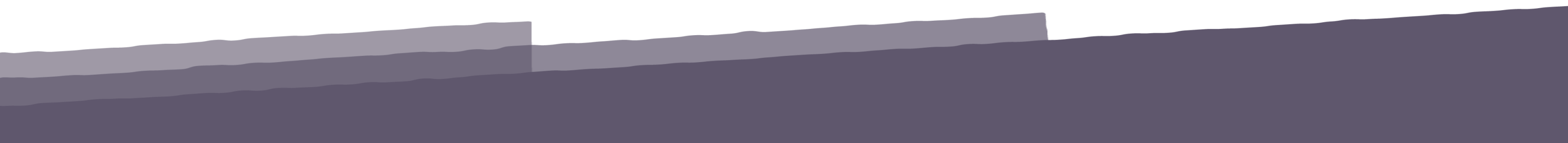
- Actively serving on 14 boards of directors of ditch companies , Dustin is serving on 6 boards.
- Successful challenge of a water right on abandonment list
- Negotiated numerous crossing agreements for various ditch companies to include protective terms for OSMP
- Active participant in SMP and Preble's Stakeholder Committee - voice of the water user and agriculture



WATER RESOURCES AT OSMP

Functional Area Highlights

Administrative

- Dam Safety Program
 - Junior In-stream flow water right for the Gross Environmental Pool
 - Water Rights Inventory
 - Decision support tools (next slide)
 - Tenant survey
- 
- A decorative graphic at the bottom of the slide consisting of several overlapping, wavy, horizontal bands in shades of purple and grey, creating a layered, mountain-like effect.

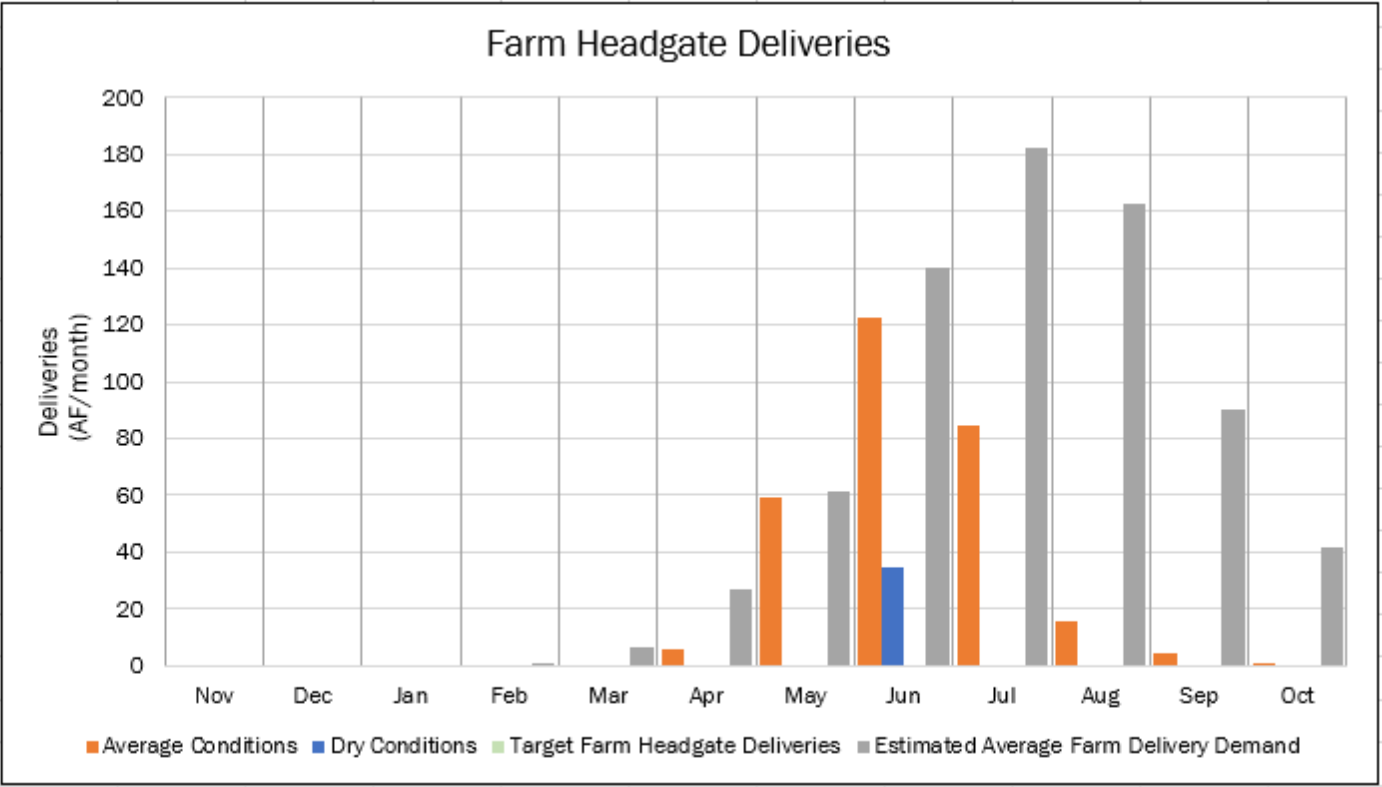
WATER RESOURCES AT OSMP

Functional Area Highlights

Administrative

Decision Support Tools !

Avg Study Period		Dry Year Study Period						
Start	2000	Start	1950					
End	2020	End	2020					
Ditch of Interest								
Dry Creek No 2 Ditch								
Shares		Ditch Loss						
OSMP Shares	86.7	Estimated Ditch Loss	10%					
OSMP % Ownership	29%	Ditch Loss Override						
Total Shares	300							
Total Unchanged Shares	183.125							
Shares of Interest	86.7	Reported Dry Year:	1981					
		Override Dry Year:						
		Irr Acreage:	233					
		Crop Type:	Pasture Grass					
		Farm Efficiency:	55%					
Month	2000 - 2020 Average			1950 - 2020 Dry Year			Target	Estimated
	Per Share	Per Share	87 Shares	Per Share	Per Share	87 Shares	Farm	Average
	River	Farm	Farm	River	Farm	Farm	Headgate	Farm Delivery
	Headgate	Headgate	Headgate	Headgate	Headgate	Headgate	Deliveries	Demand
	Diversions	Deliveries	Deliveries	Diversions	Deliveries	Deliveries	(AF/mon)	(AF/mon)
	(AF/mon/sh)	(AF/mon/sh)	(AF/mon)	(AF/mon/sh)	(AF/mon/sh)	(AF/mon)		
Nov	0.00	0.00	0.00	0.00	0.00	0.00		0.00
Dec	0.00	0.00	0.00	0.00	0.00	0.00		0.00
Jan	0.00	0.00	0.00	0.00	0.00	0.00		0.00
Feb	0.00	0.00	0.00	0.00	0.00	0.00		0.05
Mar	0.00	0.00	0.00	0.00	0.00	0.00		6.28
Apr	0.07	0.06	5.56	0.00	0.00	0.00		27.01
May	0.76	0.68	59.16	0.00	0.00	0.00		61.43
Jun	1.57	1.41	122.47	0.44	0.40	34.34		139.96
Jul	1.09	0.98	84.88	0.00	0.00	0.00		182.21
Aug	0.20	0.18	15.53	0.00	0.00	0.00		162.48
Sep	0.06	0.05	4.39	0.00	0.00	0.00	89.95	
Oct	0.00	0.00	0.08	0.00	0.00	0.00	41.63	
Annual	3.74	3.37	292.08	0.44	0.40	34.34	0	711.01
							AF/ac amount:	3.05
							AF/ac override:	



WATER RESOURCES AT OSMP

Functional Area Highlights

Tenant Survey

1. What are your biggest challenges with getting water to the property?

Andrus South - No Gate to easily access Head gate. Mo of the issue here is water from neighborhood to west 1/2 of the property year round. unusable land.

Andrus North - None. Gate replacement would be nice.

Fort Chambers - Diverting from laterals in hay/pasture field

2. Would you like more, less or same amount of communication from Water Resources staff on water matters?

☒ More

☐ Less

☐ Same

3. If you answered "More" to #2 what type of communication would be helpful?
I.e. snowpack, drought, ditch-related information, river calls, etc.

All of the above. current status on water avail.

4. What is the one item on your maintenance list that most needs to be addressed?

Andrus South Prop. Flooding. To make pasture usable

5. Is there any other feedback you would like to give to Water Resources staff (Amy Willhite, Dustin Allard) or, are there additional water issues not shown on the map?

None

6. Do you feel you have adequate water to serve the needs of the leasehold and does the proposed maintenance allow sufficient water deliveries?

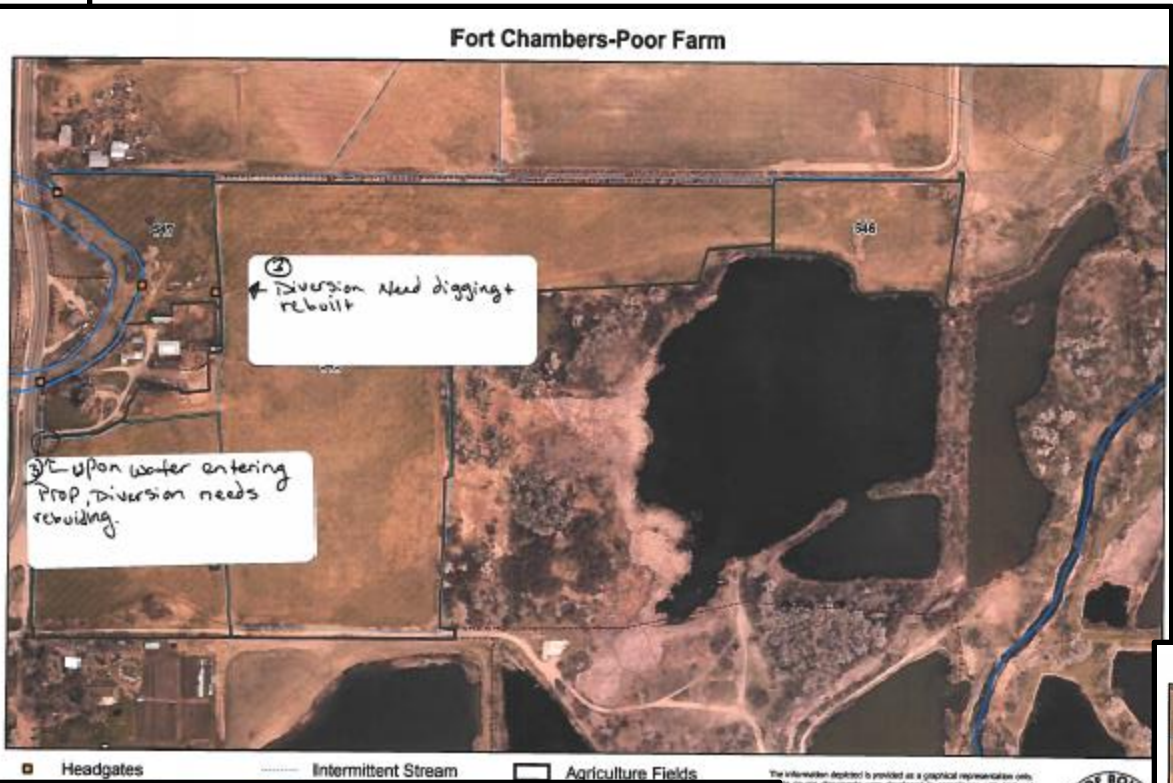
☐ Yes

☒ No - Drought's

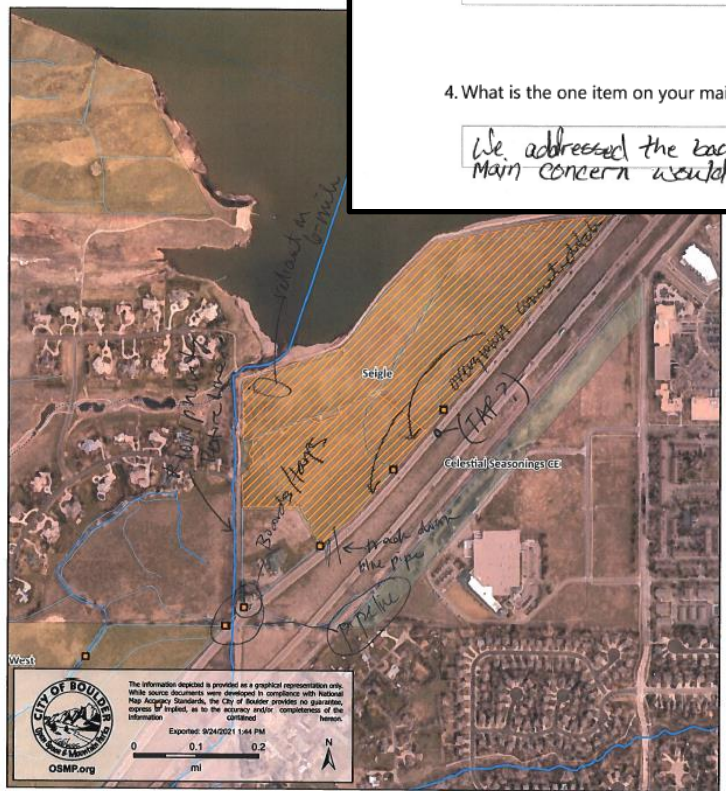
7. Are you interested in purchasing supplemental water for your leasehold if there is an opportunity to do so? If yes, staff can provide information on such opportunities.

☐ Yes

☒ No - Can not afford to pay more money out.



Golden Hook



WATER RESOURCES AT OSMP

Functional Area Highlights

Maintenance



Photo credit: Nancy Lindo



Photo credit: Dustin Allard

WATER RESOURCES AT OSMP

Functional Area Highlights

Operations

<https://dwr.state.co.us/Tools/Stations>

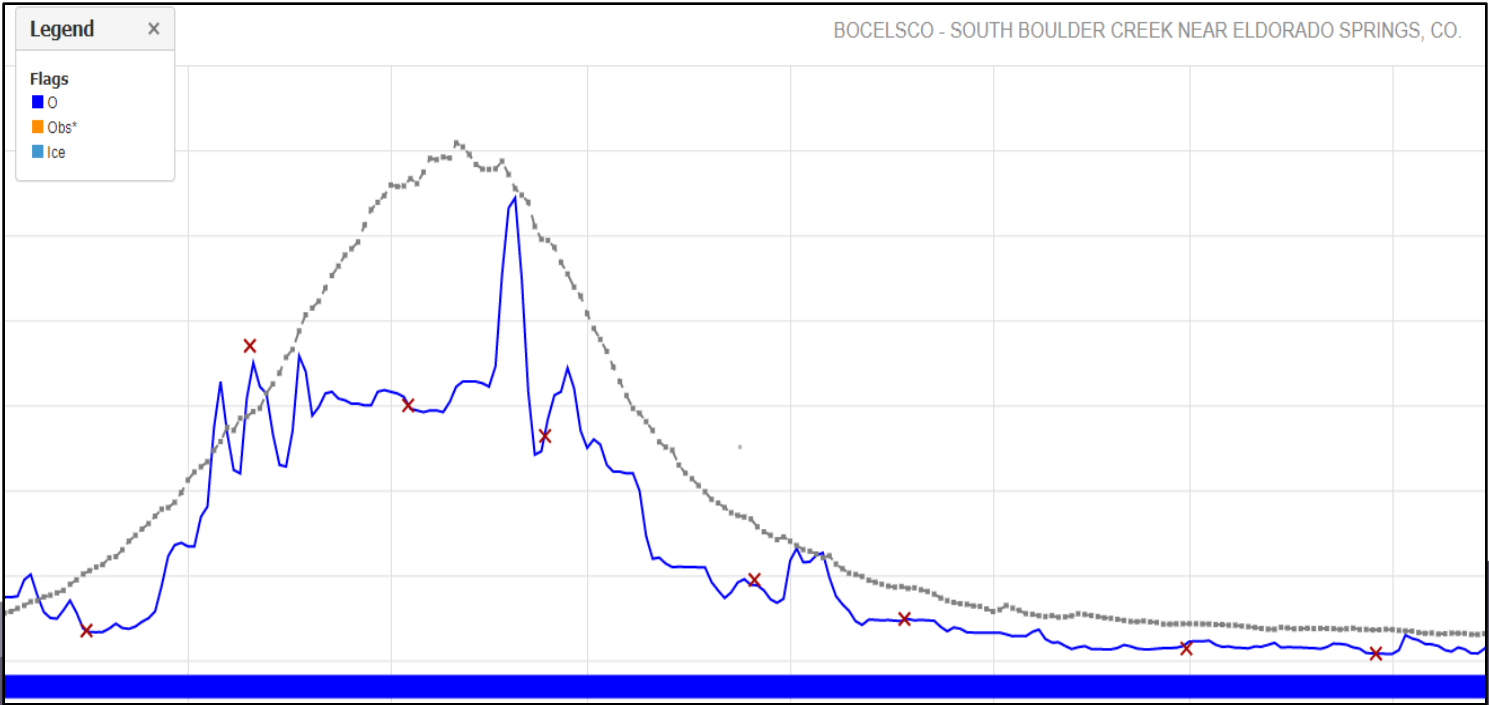
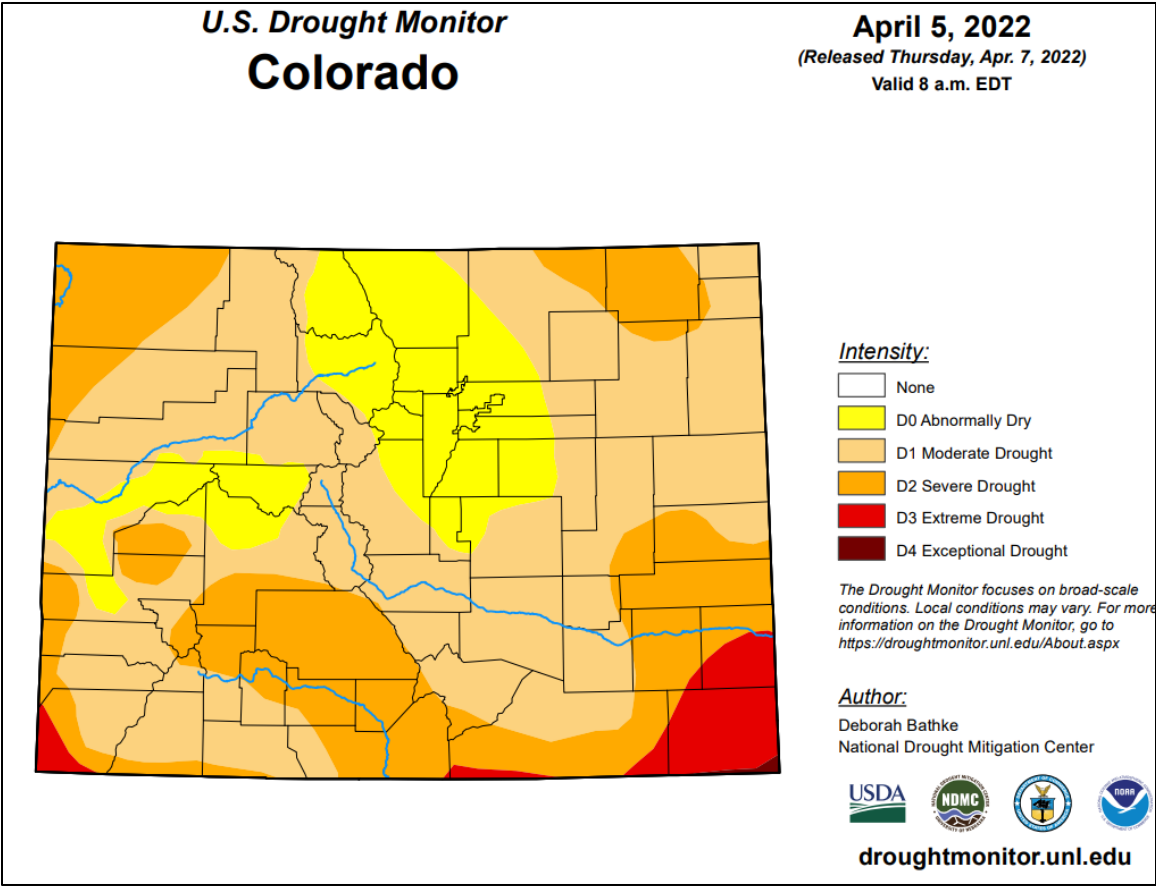


Photo credit: Brent Schantz DWR

WATER RESOURCES AT OSMP

Challenges and Future Efforts

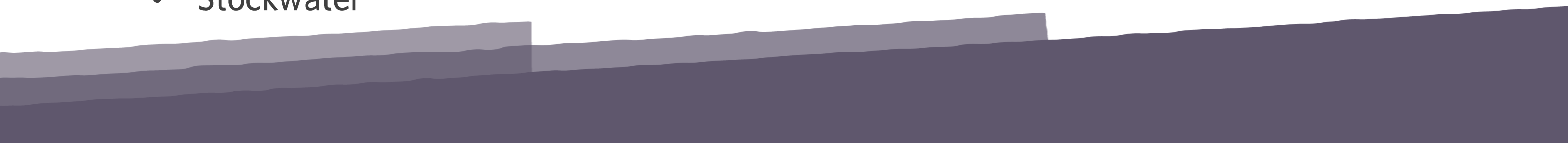
Challenges

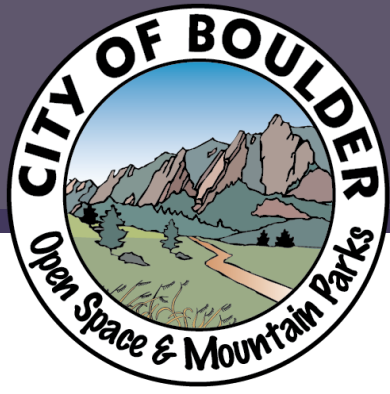


WATER RESOURCES AT OSMP

Challenges and Future Efforts

Future/ On-going Efforts

- Ecological BMP's for ditch maintenance
 - Increased CIP budget to step-up aging infrastructure maintenance
 - Drought and climate change - efficiency of water use, resilient crops
 - In-stream flow program / additional telemetry sites
 - Condition Assessment
 - Stockwater
- 
- A decorative graphic at the bottom of the slide consisting of several overlapping, wavy, horizontal bands in shades of purple and grey, creating a layered, mountain-like or water-like effect.



THANK YOU!!