



GET GROWING!

DIG A SPOT FOR COLORADO NATIVE PLANTS



Colorado native plants are beautiful and perfectly adapted to our climate and soils. They provide nectar, pollen and seeds for our native pollinators and birds. You don't need to have much space or be an expert gardener—add a few native plants to your yard to help our Colorado pollinators!



Sunny spot



Partially sunny spot



Container/pot spot

SPRING FLOWERING



PRAIRIE SMOKE

Geum triflorum

6" - 12" tall

Sun to part shade; moist to part-dry when established. Pink blooms change to feathery seed heads.



SULFUR FLOWER

Eriogonum umbellatum

6" - 12" tall

Sun; well drained soil. Flowers are long lasting and foliage turns red in the fall.



ROCKY MOUNTAIN COLUMBINE

Aquilegia caerulea

20" - 24" tall

Sun to part shade; prefers low water when established and well-drained soil.



ROCKY MOUNTAIN PENSTEMON

Penstemon strictus

12" - 24" tall

Sun; well drained soil; prefers low water when established; tall flowers.



BLANKET FLOWER

Gaillardia aristata

12" - 24" tall

Sun; adaptable to various conditions; very long-lasting flowers.



PURPLE PRAIRIE CLOVER

Dalea purpurea

24" tall

Sun; part-dry; well drained soil; prefers low water when established; long-lasting flowers.



PURPLE CONEFLOWER

Echinacea purpurea

18" - 36" tall

Sun; prefers low water when established and well-drained soil; big flowers in mid-summer.

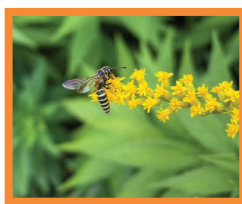


ASPEN DAISY

Erigeron speciosus

12" - 24" tall

Sun to part shade; prefers low water when established and well-drained soil; vigorous and easy to grow.



GOLDENROD

Solidago spp.

12" - 48" tall depending on species

Sun to part shade; adaptable to various conditions; some can get very large.



TALL ASTER

Machaeranthera canescans

12" - 36" tall

Sun; prefers low water; vigorous and easy to grow.



GOLDEN CURRANT

Ribes aureum

3' - 7' tall shrub

Spring blooms, fall berries. Sun; adaptable to various conditions.



WOODS ROSE

Rosa Woodsii

3' - 5' tall shrub

Spring blooms, fall hips. Sun; adaptable to various conditions; spreading.



RABBITBRUSH

Chrysothamnus nauseosus

5' - 7' tall shrub

Late fall flowering; silvery foliage; Sun; prefers low water when established.



LATE SUMMER/AUTUMN FLOWERING

SUMMER FLOWERING

SHRUBS