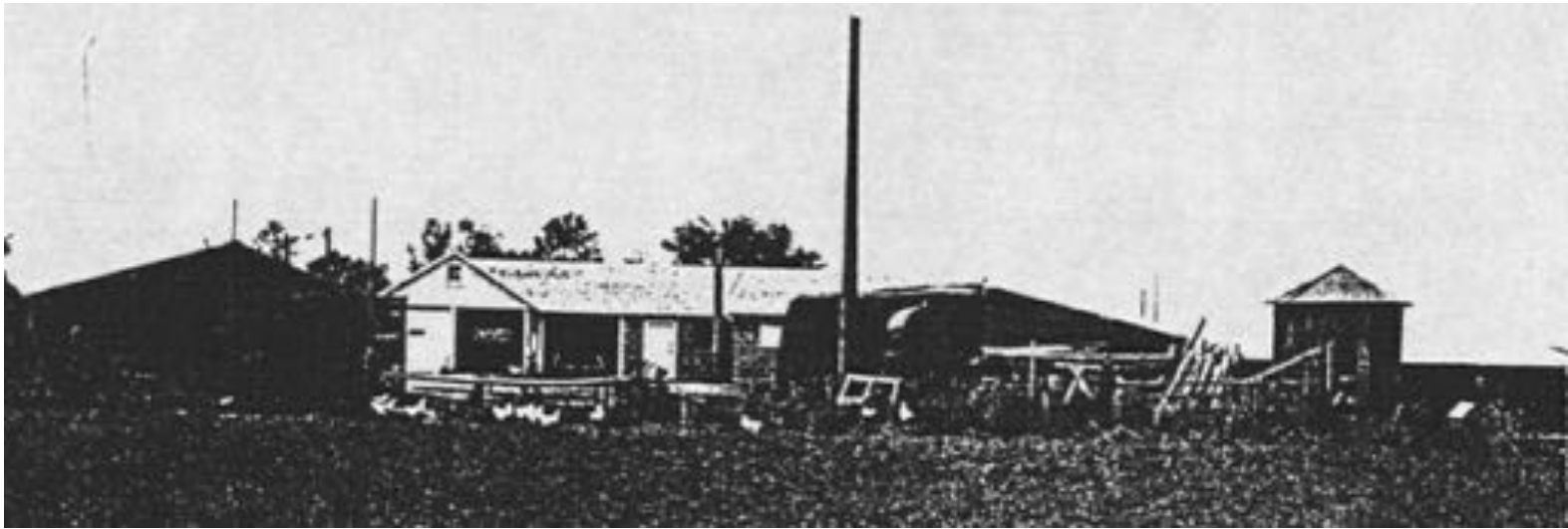


RONEY HOUSE: 1940s



PLATT FARMHOUSE: 1946



FIRE STATION NO.02: early 1900s



HARBECK-BERGHEIM HOUSE: early 1900s



GLEN HUNTINGTON BANDSHELL:

Top, 1940s; Bottom Left, late 1940's to early 1950's seating installation;
Bottom Right, 1951 seating complete



BOYD SMELTER SITE: late 1800s

Boyd and Delano Mills



CHAUTAUQUA PARK + STRUCTURES: early 1900s



PEARL STREET PEDESTRIAN MALL: 1950s & 1886



COLUMBIA CEMETERY: 1890s



COLORADO & NORTHWESTERN RAILROAD LOCOMOTIVE NO. 30
DENVER & RIO GRANDE WESTERN RAILROAD COACH NO. 280
DENVER & RIO GRANDE WESTERN RAILROAD CABOOSE NO. 04990

1950s

